

Ultra-Drain Guard Product Line vs. Enpac Storm Sentinel Product Line

Features and Benefit Comparison

Feature or Benefit	Ultra-Drain Guard®	Enpac Storm Sentinel®
Industry preferred "Witch's Hat" design? Skirt with a pouch?	Yes	No
Overload Limiter feature, cannot be loaded beyond 55 lbs?	Yes, has Overload Limiter design on standard 36"x48" model.	No, can be loaded beyond 50 lbs. The standard model 24" x 30" can weigh as much as 450 lbs.
Does not require a rope across unit to keep it from getting stuck when over-filled?	Yes, does not require a rope.	No, requires a rope to help keep unit from getting stuck in catch basin.
Overflow ports are located within 10% of the top of the unit?	Yes, prevents premature loss of pollutants.	No, overflow ports are located approximately half way down the sidewall.
Design prevents loss of filtering due to open holes in design that incoming water can flow through without contact with filter fabric?	Yes, virtually 100% of incoming water has to pass through fabric when not in a bypass mode.	No, up to 26% of incoming water can pass through designed openings in the fabric lowering the overall pollutant reduction effectiveness.
If both products use a similar material that provides 75% capture rate for sediment and oil, what is the effectiveness % when design loss is accounted for?	Approximately 75% +	Approximately 50% +
What is the maximum size grate opening the product can handle?	Up to 60" x 60"	Up to 42" x 42"
Does the optional oil filter removal device hang above the bottom of the unit to avoid being covered by sediment and rendered ineffective?	Yes	No
Are there models that specifically can remove Heavy Metals?	Yes	No
Are there models that specifically can remove phosphorus?	Yes	No
Are there models that are 100% recycled to help meet green initiatives?	Yes	No
Are there models available that can be reused?	Yes	No
Are there models available that have anti-microbial capabilities?	Yes	No
Are there models available that can work on round drains?	Yes	Yes
Are there models available that can work with combination grates and curb openings?	Yes	No
If the instructions are followed correctly, is there zero chance that the product could fall down into the catch basin when the grate is removed?	Yes, there is no chance of this happening.	No, if the unit is too heavy or full, it could fall into the catch basin.



ULTRATECH
INTERNATIONAL, INC

ULTRA-
DRAIN GUARD

THE ORIGINAL CATCH BASIN INSERT

Ultra-Drain Guard®

Installation and Maintenance Instructions

Part# 7110 / 7128 / 9217 /
9218 / 9356 / 9393

Oil & Sediment Model

Part# 9227 / 9229

Trash & Debris Model

Part# 9293

Oil & Sediment Model, High Capacity

Part# 9376 / 9377

Ultimate Model

Part# 9219 / 9220 / 9358

Oil & Sediment Plus Model

Part# 9378 / 9379

Recycled Model

Part# 9397

Heavy Metal Model

Installation:

1. Remove catch basin grating.
2. Clean dirt and debris from grating ledge
3. Insert Drain Guard. (If using the Ultra-Drain Guard High Capacity Model, Part# 9393, Ultra-Drain Guard Retainers must be used – see below for installation instructions)
4. Reinstall grate. If Retainers are not used, Drain Guard skirt must be secured (pinched) between grating and ledge.
5. Cut the excess fabric off with a blade or knife if desired.

Installation with optional Ultra-Drain Guard Retainers (Part# 9237 / 9238):

- Follow steps 1 and 2 above. Insert Retainer through handling straps of Drain Guard. (Each Retainer should be holding two straps).
- Insert Drain Guard, placing Retainers across basin opening so that flat plates lay on grating ledge.
- Follow steps 4 and 5 above.

TIPS

- Use rebar, steel rod or other weights to hold the skirt in place when replacing the grating.
- Alternatively, you can lay the Drain Guard on the ground and then lift the grating out and place it on top of the Drain Guard. Then wrap the excess fabric around the grate and secure it using tape, magnets or clamps.





ULTRATECH
INTERNATIONAL, INC

ULTRA-
DRAIN GUARD
THE ORIGINAL CATCH BASIN INSERT

Maintenance and Disposal:

1. The Ultra-Drain Guard filters are designed to be used for 3 to 6 months under normal conditions. Where heavy contamination is present the unit will have a reduced life expectancy. When the unit has collected about 6 inches of sediment it is recommended that it be replaced. The unit should also be replaced if free oil can be seen floating and is not being absorbed. The Ultra-Drain Guards should be inspected on a regular basis.
2. Dispose of unit in accordance with applicable Federal, state and local environmental laws and regulations. The user is solely responsible for compliance with maintenance and disposal laws and regulations. The manufacturer or seller assumes no responsibility for proper or improper maintenance or disposal.
3. Part# 9393 (High Capacity model) is equipped with two lifting straps to facilitate in removal of the Ultra-Drain Guard using a forklift or other lifting device, as this model can hold up to 300 lbs. of sediment.



ULTRATECH
INTERNATIONAL, INC.

Ultra-Drain Guards® Specifications

Material Specifications

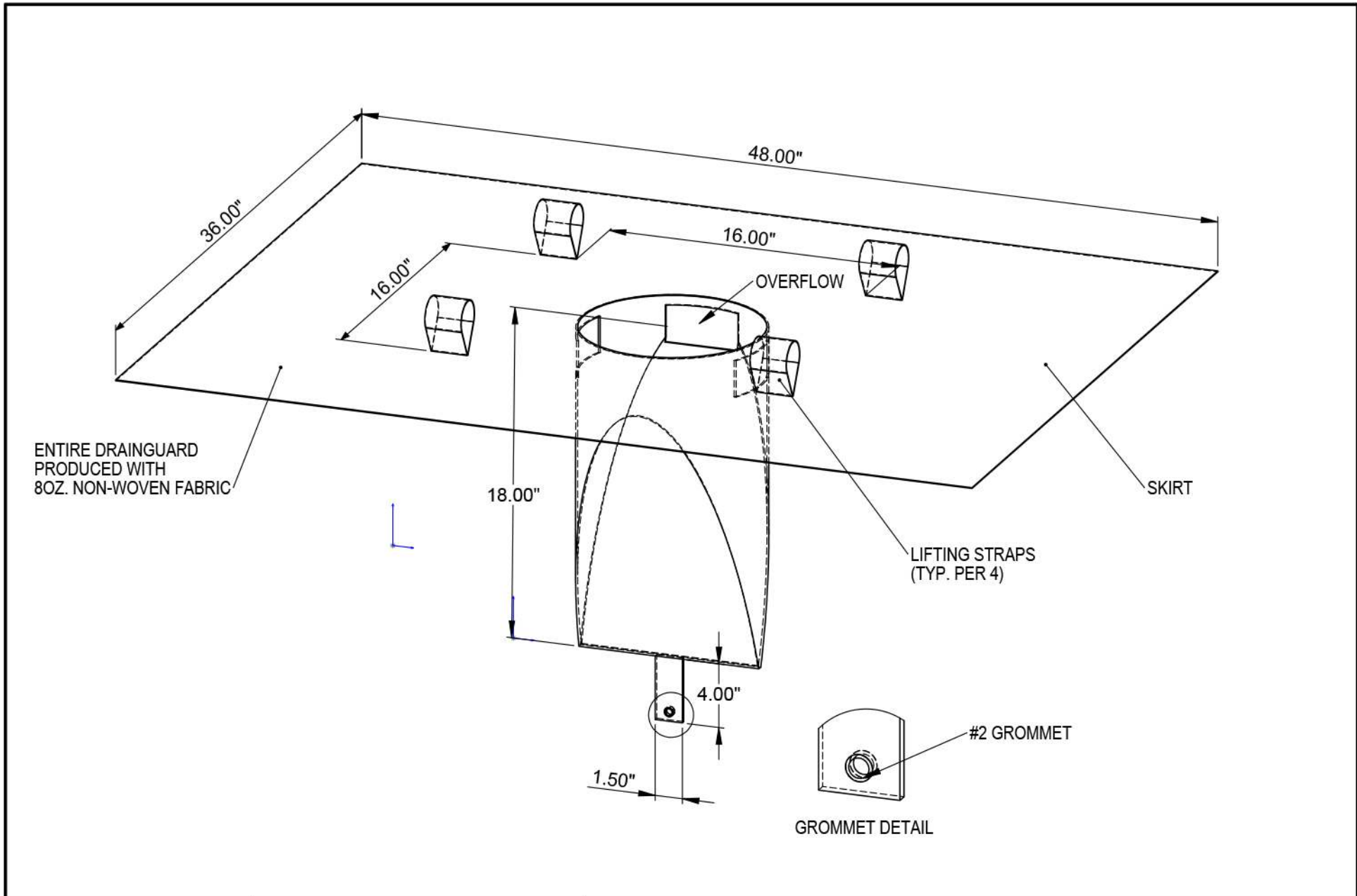
Properties	ASTM Test	Value
Material: Non-woven, Polypropylene Geotextile		
Grab Tensile	D 4632	205 lbs
Elongation	D 4632	50%
Trapezoid Tear	D 4533	85 lbs
Puncture	D 4833	525 lbs
CBR Puncture	D 6241	600 lbs
Mullen Burst	D 3786	420 psi
Permittivity	D 4491	1.4 sec ⁻¹
A.O.S. (U.S. sieve no.) / Microns	D 4751	80 / 180
UV Stability (strength retained %) 500 hrs	D 4355	70%
Fabric Weight (oz/yd ²) (typical)	D 5261	8 oz/yd ²
Flow (through material)	D 4491	90 gpm/ft ²
Flow (bypass ports gpm) *		770 gpm
Flow (bypass ports cfs) *		1.7 cfs

* Larger bypass flow rate designs are available



Unit Specifications

Model	Oil Capture (Gal)	Sediment Capture (lbs)	Collection Area (dia x depth)	Flow Rate (gpm)	Dimensions
Oil & Sediment ² Part # 9217	.87	40	10" x 18"	500	48" x 36" x 18"
Oil & Sediment ² Part # 9356	1.55	40	10" x 18"	900	60" x 60" x 18"
Oil & Sediment Plus ² Part # 9219	1.38	40	10" x 18"	500	48" x 36" x 18"
Oil & Sediment Plus ² Part # 9358	2.06	40	10" x 18"	900	60" x 60" x 18"
Trash & Debris Part # 9227	----	40	10" x 18"	500	48" x 36" x 18"
Ultimate ³ Part # 9376	1.57	40	10" x 18"	500	48" x 36" x 38"
High Capacity Part # 9393	1.9	300	24" x 24"	1000	60" x 60" x 24"
Adjustable Frame Model Part# 8930	1.26	40	10" x 18"	500	Varies



THE INFORMATION CONTAINED IN THIS DRAWING IS THE SOLE PROPERTY OF ULTRATECH INTERNATIONAL, INC. ANY REPRODUCTION IN PART OR AS A WHOLE WITHOUT THE WRITTEN PERMISSION OF ULTRATECH INTERNATIONAL, INC IS PROHIBITED.



ULTRATECH
INTERNATIONAL, INC.

DRAINGUARD PART#9217

UltraTech International, Inc. 904-292-1611 stormwaterproducts.com



WE KNOW CATCH BASIN INSERTS

11 DIFFERENT MODELS
10 YEARS OF STORMWATER KNOWLEDGE
INNOVATION TO MEET ANY NEED



SEE DETAILED SPECIFICATIONS ON THESE
AND OTHER STORMWATER PRODUCTS AT
WWW.STORMWATERPRODUCTS.COM

Ultra-Drain Guard Model Comparison

ULTRA-DRAIN GUARD™ MODEL	REMOVES OIL	REMOVES SEDIMENT	REMOVES HEAVY METALS	REMOVES TRASH & DEBRIS	USES ULTRA-X-TEX	ECO-SMART	TRIM-TO-FIT	EXTRA LARGE CAPACITY	CURB-INSERT STYLE AVAILABLE	USES ULTRA-MICROBES	REUSABLE COMPONENTS	ADJUSTABLE FRAME	BMP	SWPPP	LEED
1. OIL & SEDIMENT	✓ 0.87 Gals.	✓		✓			✓						✓	✓	✓
2. OIL & SEDIMENT PLUS	✓ 1.38 Gals.	✓		✓	✓	✓	✓						✓	✓	✓
3. TRASH & DEBRIS				✓			✓						✓	✓	✓
4. ULTIMATE	✓ 1.57 Gals.	✓		✓	✓	✓	✓						✓	✓	✓
5. CURB-INSERT	✓	✓		✓	○	○	✓		✓				✓	✓	✓
6. RECYCLED	✓ 1.26 Gals.	✓		✓	✓	✓	✓						✓	✓	✓
7. REUSABLE		✓		✓				✓	✓		✓		✓	✓	✓
8. HIGH-CAPACITY	✓ 1.9 Gals.	✓		✓			✓	✓					✓	✓	✓
9. HEAVY METAL	✓ 0.23 Gals.	✓	✓	✓			✓						✓	✓	✓
10. ADJUSTABLE FRAME	✓ 0.87 Gals.	✓		✓							✓	✓	✓	✓	✓
11. MICROBE BOOM	✓	✓		✓		✓	✓			✓			✓	✓	✓

○ - Optional.