

EB16EAS-189LI Lithium-Iron Walkie Stacker

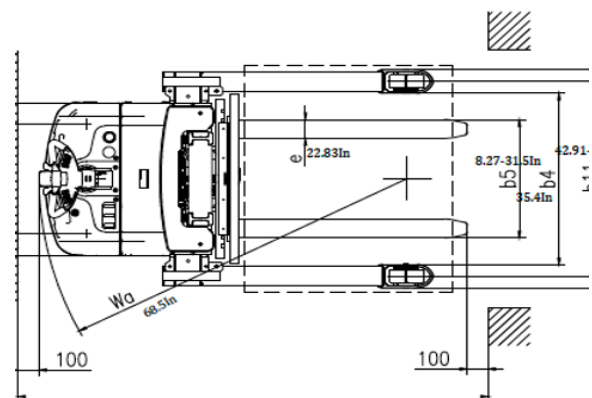
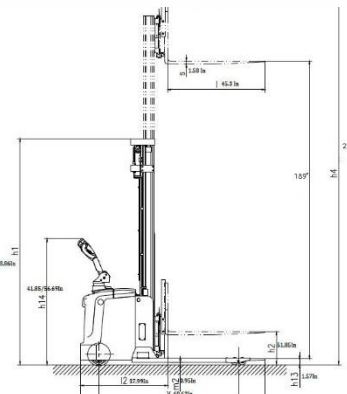
The EKKO EB16EAS-189LI Electric Straddle Stacker is designed with the combination of the versatility of a forklift, reach truck and a walkie stacker with SIDE-SHIFTING capabilities. It is ideal for loading and unloading trucks, loading docks, stock rooms, manufacturing floors and warehousing.

Made from high quality steel and components with durable quality drives to withstand any terrain, usage, impact and directional changes for the use of any application with confidence and assurance.

- Load Capacity 4400 lb.
- Raised Height 189"
- Side-Shift
- Adjustable Forks 8.27-31.5"
- Adjustable Legs 38.06-51.8"
- Fork Length 45.3"
- Free Lift 51.85"
- EPS (Electric Power Steering)
- Curtis Instrument Controller
- 24V Center AC Drive Motor
- 24V Lift Motor
- Triple Mast
- Battery 24V/210Ah
- Ergonomic Handle and Controls
- 3 Year Limited Warranty



Model		EB16EAS-189LI
Load capacity	(lb.)	4400
The max. lifting height	(in)	189
Load center distance	(in)	23.62
Free Lift	(in)	51.85
EPS (Elec. Power Steer)		Yes
Fork length	(in)	45.28
Single fork width	(in)	4.7
Overall fork width	(in)	8.27-31.5
Lowered fork height	(in)	1.57
Fixed leg length	(in)	42
Adjustable legs	(in)	38.06-51.81
Turning radius	(in)	68.5
Overall length	(in)	83.26
Max width	(in)	46.93-60.71
Extended mast height	(in)	227
Lowered mast height	(in)	88.86
Battery voltage	(V/Ah)	24/150Ah Li
Charger	(V/A)	24V/30A
Lifting Motor	(W)	3000 Watt, Lift speed, laden/unladen:95/160m/s Lowering speed, laden/unladen:130/110mm/s
AC Driving Motor	(W)	3000 Watt, Driving speed: laden/unladen: 5.2/5.5km/h
Service Weight	(lb.)	3520



EKKO[®]

MATERIAL HANDLING EQUIPMENT.

MOVING **AHEAD**

LITHIUM WALKIE STRADDLE STACKER EB16EAS-189Li

- 4400 lbs. Capacity
- 189 in. Lift Height
- **SIDE-SHIFT**
- Free Lift 51.85 In.
- EPS (Electric Power Steering)
- 24V Center AC Drive Motor
- Turning Radius 68.5"
- Works in a 8.5 ft aisle
- Adjustable Legs 38.06-51.81 in.
- Adjustable Forks 8.27-31.5 in.
- Curtis Instrument Controller
- Batteries and Charger Included
- 3 Year Limited Warranty



EB16EAS-189Li

Superior quality, maneuverable, compact, and durable for all your material handling applications. Ideal for compact spaces.

WEIGHT CAPACITY: 4400 lbs. @ 24" load center

LIFT HEIGHT: 189" (15.75 ft.)

FREE LIFT: 51.85"

FORK LENGTH: 45.3"

ADJUSTABLE OUTRIGGERS: 38.06-51.81"

ADJUSTABLE FORKS: 8.27-31.5"

MAST HEIGHT: 88.86"

TURNING RADIUS: 68.5"

BATTERY / CHARGER: Lithium 24V-150Ah Battery with 24V-50A Charger

SIDE-SHIFT: 4.7"

LIFTING SPEED: : 5.35 IPS empty; 3.6 IPS loaded

LOWERING SPEED: 3.85 IPS empty; 4.4 IPS loaded

DRIVE WHEELS: : 9" x 3" polyurethane

LOAD WHEELS: (2) 4" x 3" polyurethane per outrigger

EPS (Electric Power Steering)

HYDRAULICS LIFTING MOTOR: 24V 3000-Watt lifting motor with hardened chrome moly steel for durability.

DRIVE MOTOR: 24V AC Drive Motor

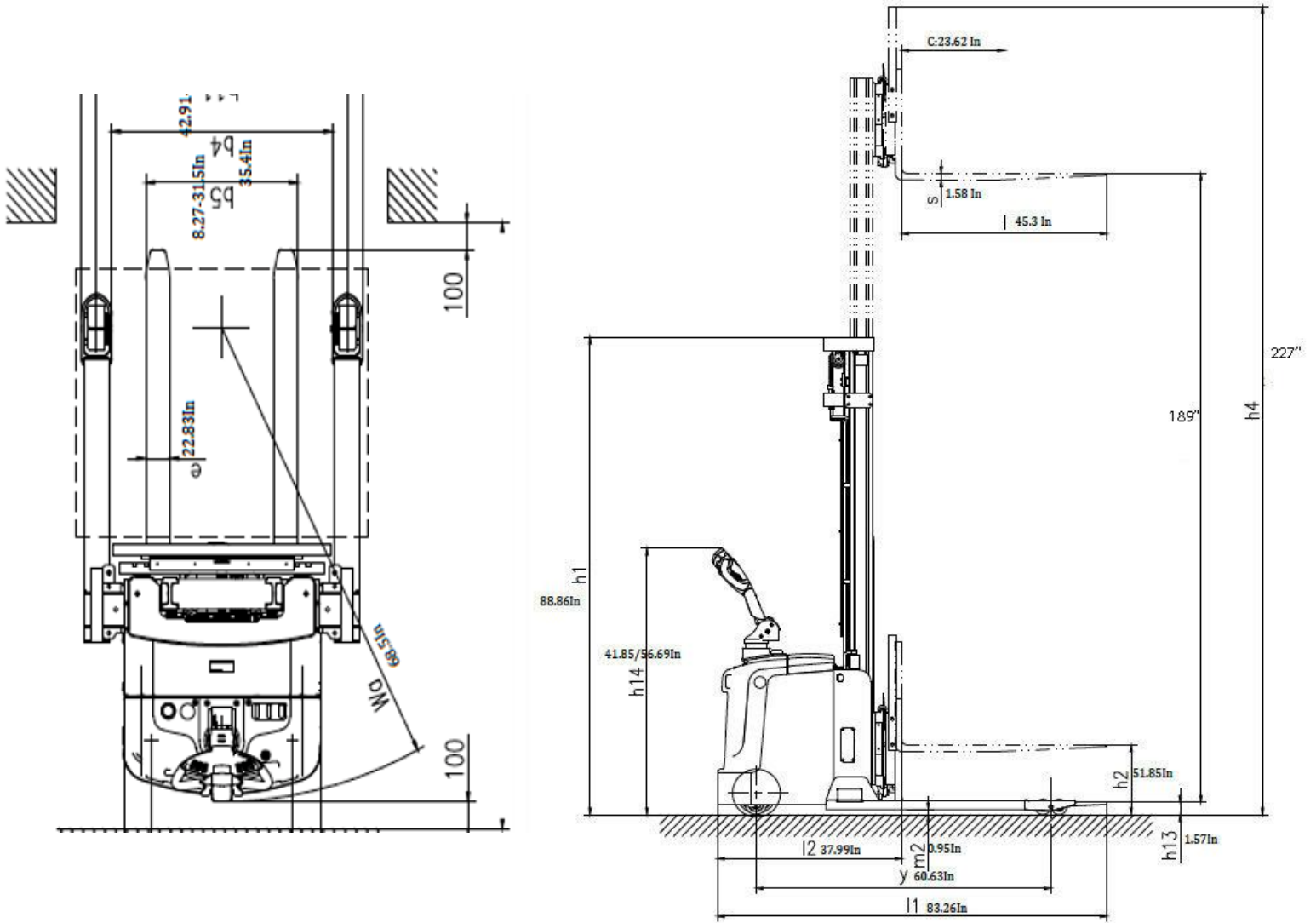
AC CONTROLLER: 24V CURTIS Instrument provides performance through entire range of speed; Constant travel speed regardless of load; Battery discharge indicator combination gauge.

OPERATOR CONTROLS: Throttle, lifting, lowering, turtle mode and horn functions are in the ergonomic handle; Offset steering handle to provide better visibility; Belly button reverse safety feature allows the unit to stop and reverse to avoid collision or injury.

CHASSIS AND MAST: Robotic Welding; Heavy duty steel chassis with I-beam mast for durability; Telescoping mast includes a protective steel guard.



LITHIUM STRADDLE STACKER **EKKO**®



MODEL #	MAST	LIFT HEIGHT	MAX MAST HEIGHT	SERVICE WEIGHT
EB16EAS-189Li	88.86"	189"	227"	3520 Lbs.