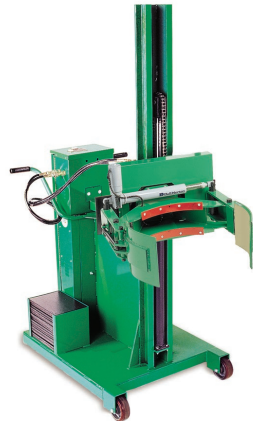


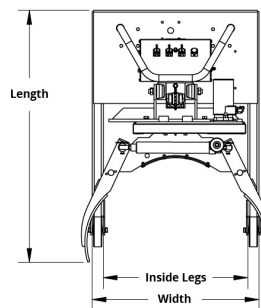
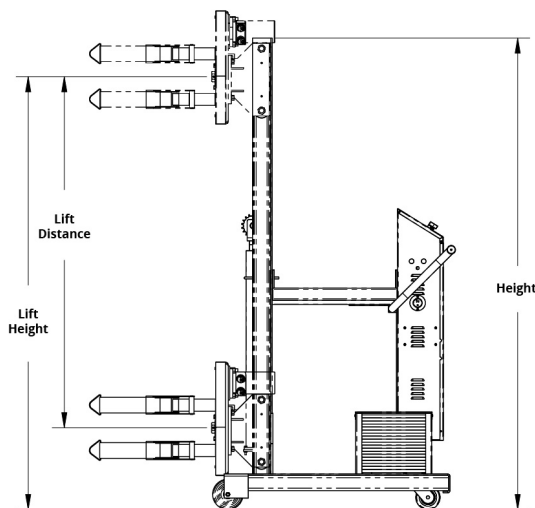


Strap Connection
Straddle

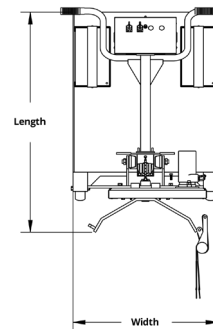


Grip Connection
Counterweighted

- Powered lifting and rotating (manual drive).
- Easily transport and dump drums (steel, plastic and fiber) throughout facilities.
- Rotate 360° continuously in either direction, at 6 RPM.
- Grip: jaws electronically grab drums, 18-24" in diameter.
- Straps: secure drums manually, 14-24" in diameter.
- Straddle: extended legs go under pallets, shelving, or on outside of drums.
- Counterweighted: ability to butt directly up to pallets, shelving, or other items.
- Standalone unit (no forklift required).
- Heavy gauge steel construction.
- Optional floor lock available (sold separately).
- Premium powder coat paint finish.
- Ships fully assembled, ready to use.
- Made in the U.S.A.



Straddle



Counterweighted

Semi-Powered Drum Lift and Rotators

Model #	Connection Type	Base	Height	Lift		Power Source	Turn Radius	Inside Legs	Casters	Dimensions L x W x H	Capacity (lbs.)	Weight (lbs.)
				Ht.	Dist.							
F88565C7	Strap Connection	Straddle	78"	71"	58"	12V Battery	44"	25"	(2) 6" Front Rigid, (2) 4" Rear Swivel	43 x 30 x 78"	800	510
F88566C6			90"	84"	71"					43 x 30 x 90"		525
F88569C3		Counter-weighted	78"	71"	58"		39"	-		46 x 30 x 78"		1,075
F88570C0			90"	84"	71"					46 x 30 x 90"		1,100
F88585C3	Grip Connection	Straddle	78"	71"	58"		44"	25"		45 x 30 x 78"		560
F88586C2			90"	84"	71"					45 x 30 x 90"		595
F88587C1		Counter-weighted	78"	71"	58"		39"	-		62 x 30 x 78"		1,150
F88588C0			90"	84"	71"					62 x 30 x 90"		1,185

Straddle Floor Lock: Model # F89410A2, optional floor lock for straddle models

Counterweighted Floor Lock: Model # F89413A9, optional floor lock for counterweighted models

