

FRAME MATERIAL: ALUMINUM  
 WHEELS: PNEUMATIC  
 BRAKE: NO  
 LOAD CAPACITY: 1,000 LBS.  
 WEIGHT: 45 LBS.  
 WIDTH: 25-1/2"  
 DEPTH: 20-3/4"  
 HEIGHT: 58.9"  
 LOCKING CHIME HOOK "L" AS SUFFIX  
 FIBER CHIME HOOK "F" AS SUFFIX  
 CABLE CHIME HOOK "C" AS SUFFIX  
 PLASTIC CHIME HOOK "P" AS SUFFIX

**PROPRIETARY AND CONFIDENTIAL**

THE INFORMATION CONTAINED IN THIS DRAWING IS THE SOLE PROPERTY OF VALLEY CRAFT. ANY REPRODUCTION IN PART OR AS A WHOLE WITHOUT THE WRITTEN PERMISSION OF VALLEY CRAFT IS PROHIBITED.

**UNLESS OTHERWISE SPECIFIED:**

DECIMALS  
 2 PLACES ±0.01  
 3 PLACES ±0.005  
 ANGLE ±1°

**GRIND/SAND SHARP EDGES .015 MAX DOES NOT APPLY TO DRILLED HOLE DIA.**



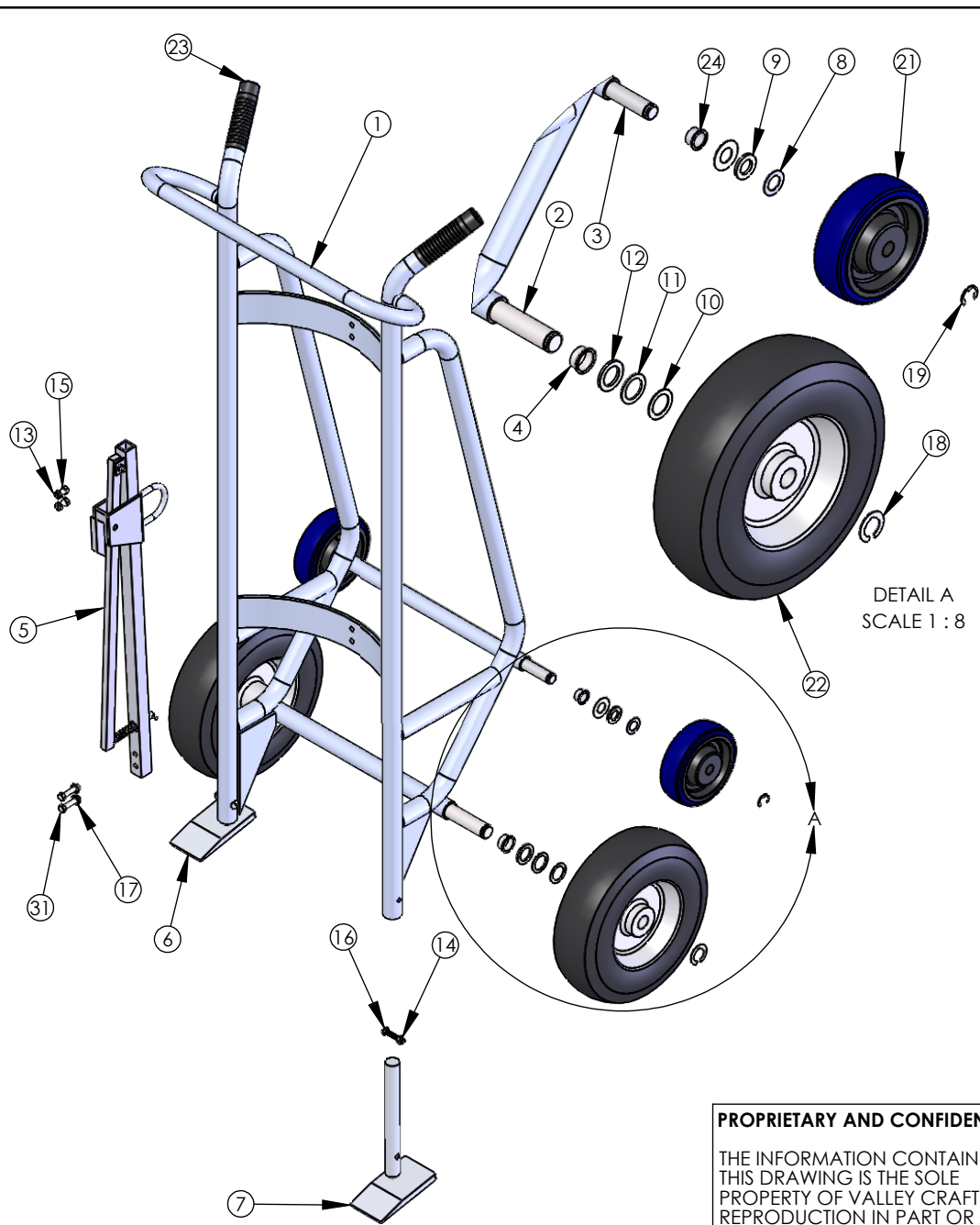
**TITLE:** TRK-DRUM/650AA STD CH

	NAME	DATE
DRAWN	salvopb	5/08
CHECKED		
ENG APPR.		

SIZE	PART NO.
A	F82175A2
<b>MATL:</b>	
SCALE: 1:24	WEIGHT: 59.67 SHEET 1 OF 3

CHG.	E.C.O.	DESCRIPTION / WAS	BY	DATE
C	E21-037	ADDED (2) F57261A8	DN	04/30/2021

**ALL ANGLES ARE 90° UNLESS SPECIFIED**



ITEM NO.	PART NUMBER	DESCRIPTION	QTY.
1	F60507A7	F W/650AA	1
2	F30041A3	AXLE-FRT/650A	1
3	F30173B1	AXLE-REAR/650A	1
4	F57260A9	BRG-STL FLG 1.01X1.05X.5	2
5	F60063B1/R60063	C H ASSY-A/STD -- CS, use R60063 for RPMTS	1
5	F62771A2	CH ASSY-A/ CABLE	1
5	F60950A9	CH ASSY-A/ FIBER	1
5	F60947A5	CH ASSY-S/ LOCKING	1
5	F60945A7	CH ASSY-S/ PLASTIC	1
6	F60065A1/R60065	SHOE WLDMT-RH A/600A -- CS, use R60065 for RPMTS	1
7	F60066A0/R60066	SHOE WLDMT-LH A/600A -- CS, use R60066 for RPMTS	1
8	Z10008A0	BUSH-MACH 6H 3/4x18Gax1-1/4 OD	2
9	Z10010A6	BUSH-MACH 3/4x10Gax1-1/4 OD	2
10	Z10011A5	BUSH-MACH 1x18Gax1-1/2 OD	2
11	Z10012A4	BUSH-MACH 1x14Gax1-1/2 OD	2
12	Z10013A3	BUSH-MACH 1x10Gax1-1/2 OD	2
13	Z10036A6	NUT-HEX KEPS 5/16-18	4
14	Z10045A5	NUT-NYL NE 5/16-18	2
15	Z10122A1	S-HHC 5/16-18X3/4	2
16	Z10184A6	S-RHM 5/16-18X1-3/4	2
17	Z10200A6	WASHER-1/4 FLAT USS	2
18	Z10223A9	RING-RTNG 1	2
19	Z10236A4	RING-RTNG 3/4 5304	2
20	Z10491A6	BUSH-MACH 3/4x18Gax1-1/2 OD	4
21	Z30135A4	WHL-6 x 2 U/P 3/4	2
22	Z30681A7	WHL-12 AIR	2
23	Z50085A2	GRIP-HDL 1-1/4" BLK	2
24	F57261A8	BRG-STL FLG .760X.825X.5	2
31	Z10125A8	S-HHC 5/16-18X1-1/2	2

DETAIL A  
SCALE 1:8

**PROPRIETARY AND CONFIDENTIAL**  
THE INFORMATION CONTAINED IN THIS DRAWING IS THE SOLE PROPERTY OF VALLEY CRAFT. ANY REPRODUCTION IN PART OR AS A WHOLE WITHOUT THE WRITTEN PERMISSION OF VALLEY CRAFT IS PROHIBITED.

**UNLESS OTHERWISE SPECIFIED:**  
DECIMALS  
2 PLACES ±0.01  
3 PLACES ±0.005  
ANGLE ±1°  
**GRIND/SAND SHARP EDGES .015 MAX DOES NOT APPLY TO DRILLED HOLE DIA.**

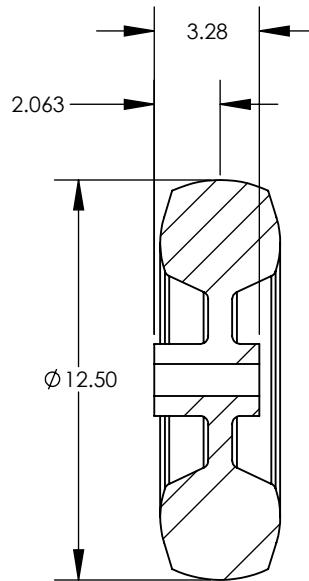
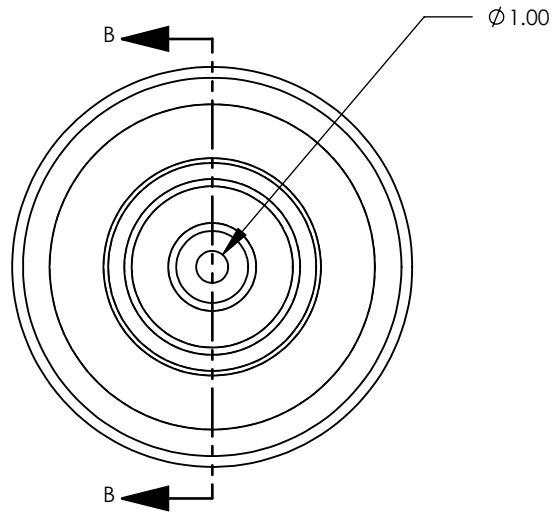
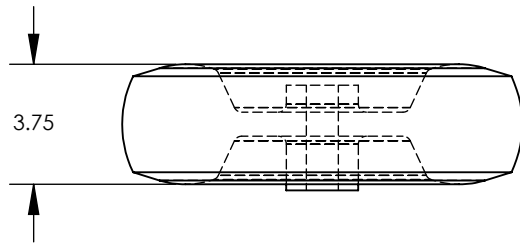


**TITLE:** TRK-DRUM/650AA STD CH

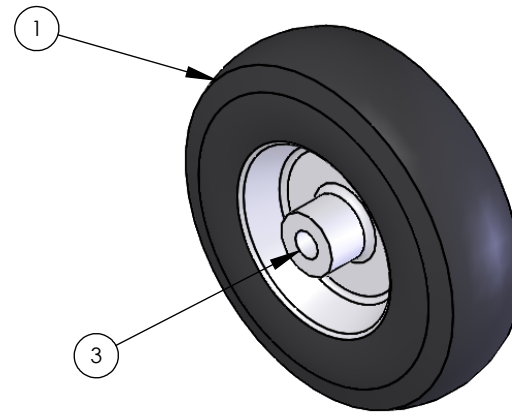
C	E21-037	ADDED (2) F57261A8	DN	04/30/2021
CHG.	E.C.O.	DESCRIPTION / WAS	BY	DATE

**ALL ANGLES ARE 90° UNLESS SPECIFIED**

DRAWN	salvopb	DATE	5/08	SIZE	A	PART NO.	F82175A2	
CHECKED						MATL:		
ENG APPR.				SCALE:	1:24	WEIGHT:	59.67	SHEET 2 OF 3



SECTION B-B



- 1. TIRE SIZE: 12 - 1/2 X 3 - 3/4 (4.1/3.5 - 6)
- 2. TREAD PATTERN: SAWTOOTH
- 3. WHEEL MATERIAL: RUBBER
- 4. LOAD CAP./WHEEL: LOAD RANGE "B"
- 5. WEIGHT/WHEEL: 7#
- 6. OVERALL HUB WIDTH: 3.28
- 7. OFFSET CENTER OF WHEEL TO END OF HUB: 2 - 1/16
- 8. HUB MATERIAL: STEEL
- 9. BEARING TYPE: BALL
- 10. BORE OR AXLE SIZE: 1
- 11. HUB COLOR: SILVER
- 12. GREASE ZERK: NO
- 13. VENDOR: HOOSIER #869H34-82

Item Number	Part Number	Description	Qty.
1	Z30007A9	TIRE-AIR 12	1
2	Z30008A8	TUBE-AIR 12	1
3	Z30002A4	BEARING-FLG 1/RPMT	2

B		DRAWN FROM CADKEY	PBS	1/08
CHG.	E.C.O.	DESCRIPTION / WAS	BY	DATE

**PROPRIETARY AND CONFIDENTIAL**

THE INFORMATION CONTAINED IN THIS DRAWING IS THE SOLE PROPERTY OF VALLEY CRAFT. ANY REPRODUCTION IN PART OR AS A WHOLE WITHOUT THE WRITTEN PERMISSION OF VALLEY CRAFT IS PROHIBITED.

**ALL ANGLES ARE 90° UNLESS SPECIFIED**

**UNLESS OTHERWISE SPECIFIED:**

DECIMALS  
2 PLACES ±0.01  
3 PLACES ±0.005  
ANGLE ±1°

**GRIND/SAND SHARP EDGES .015 MAX DOES NOT APPLY TO DRILLED HOLE DIA.**

	NAME	DATE
DRAWN	salvopb	1/08
CHECKED		
ENG APPR.		



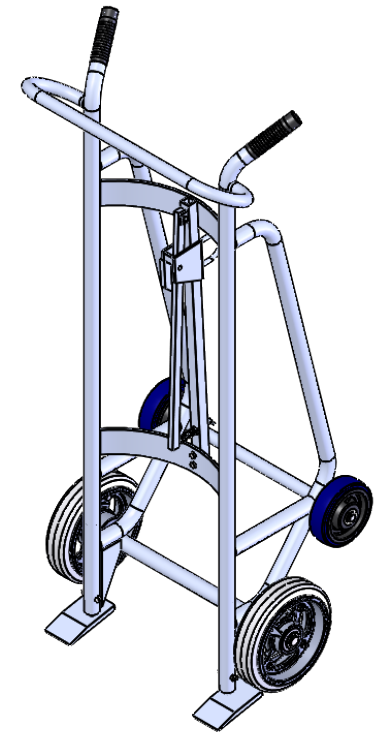
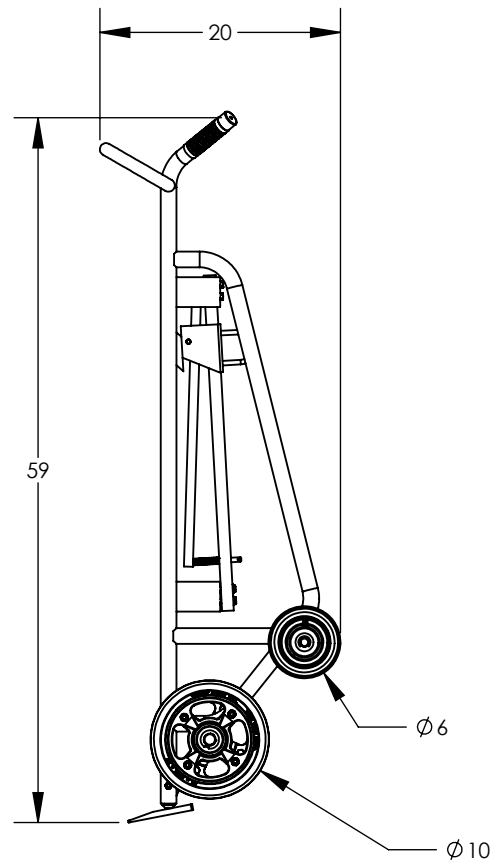
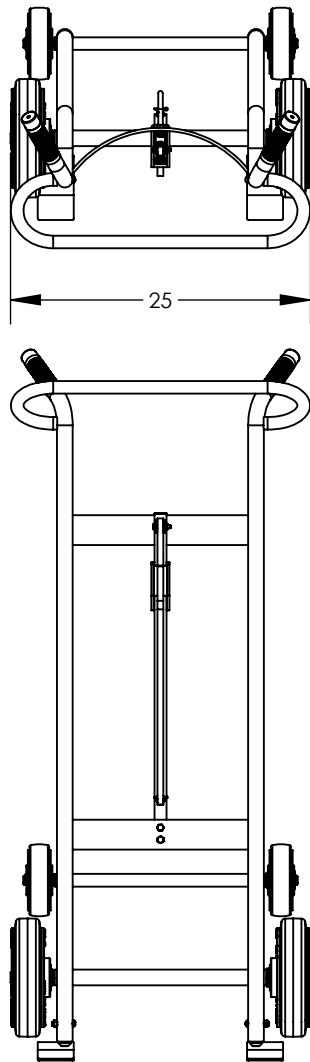
2001 South Hwy. 61, Lake City, MN 55041-9555, U.S.A.

**TITLE:** WHL-12 AIR

**SIZE:** **A** **PART NO.:** Z30681A7

**MATL:**

SCALE: 1:6 WEIGHT: 12.53 SHEET 3 OF 3



FRAME MATERIAL: ALUMINUM  
 WHEELS: SOLID RUBBER  
 BRAKE: NO  
 LOAD CAPACITY: 1,000 LBS.  
 WEIGHT: 46 LBS.  
 WIDTH: 25"  
 DEPTH: 20"  
 HEIGHT: 58.9"  
 LOCKING CHIME HOOK "L" AS SUFFIX  
 FIBER CHIME HOOK "F" AS SUFFIX  
 CABLE CHIME HOOK "C" AS SUFFIX  
 PLASTIC CHIME HOOK "P" AS SUFFIX

**PROPRIETARY AND CONFIDENTIAL**

THE INFORMATION CONTAINED IN THIS DRAWING IS THE SOLE PROPERTY OF VALLEY CRAFT. ANY REPRODUCTION IN PART OR AS A WHOLE WITHOUT THE WRITTEN PERMISSION OF VALLEY CRAFT IS PROHIBITED.

**UNLESS OTHERWISE SPECIFIED:**

DECIMALS  
 2 PLACES  $\pm 0.01$   
 3 PLACES  $\pm 0.005$   
 ANGLE  $\pm 1^\circ$

**GRIND/SAND SHARP EDGES .015 MAX DOES NOT APPLY TO DRILLED HOLE DIA.**



**TITLE:** TRK-DRUM/650AS STD CH

**SIZE:** **PART NO.** F82425A0

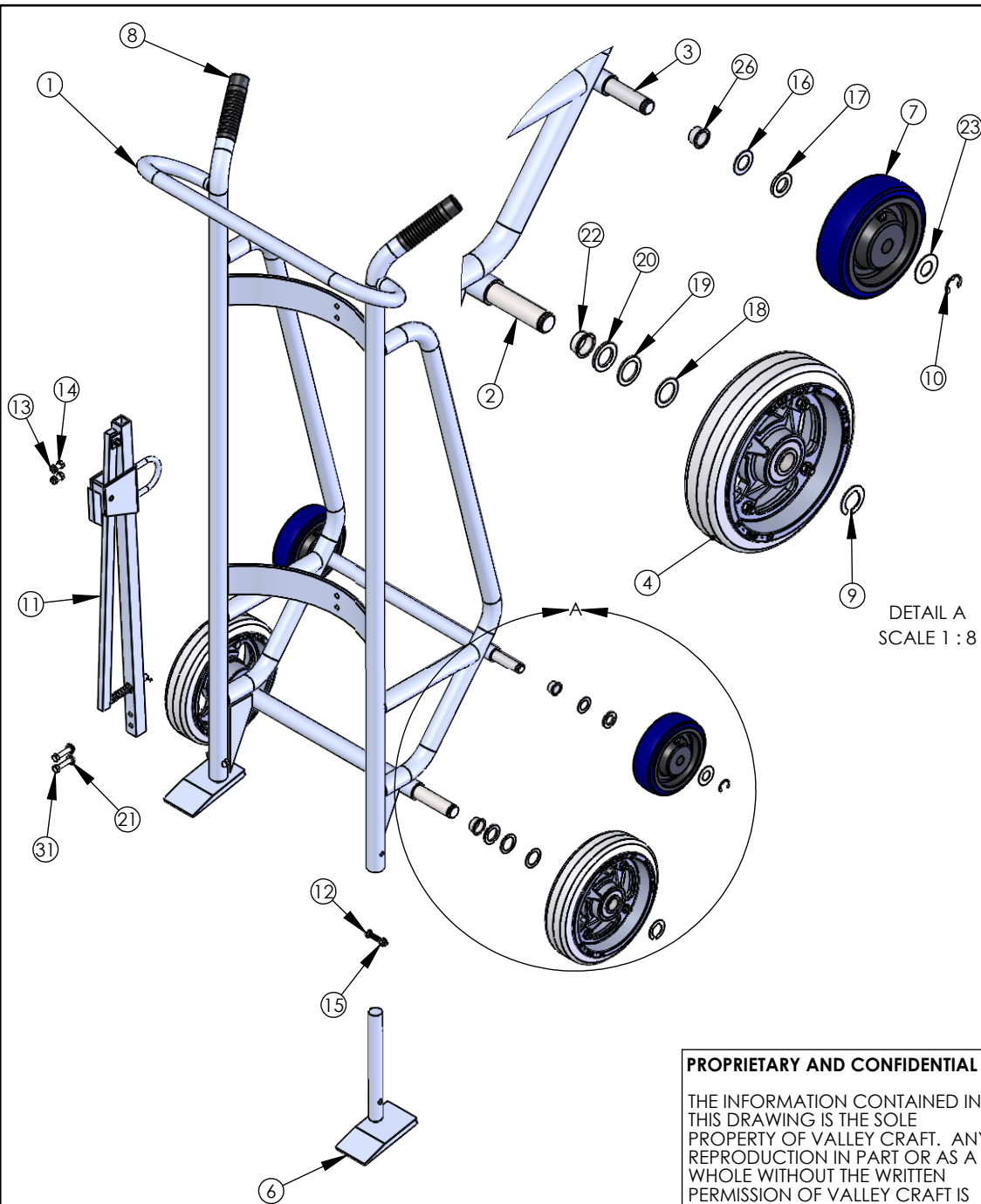
**MATL:**

**SCALE:** 1:16 **WEIGHT:** 48.72 **SHEET 1 OF 3**

C	E21-037	ADDED (2) F57261A8	DN	04/30/2021
CHG.	E.C.O.	DESCRIPTION / WAS	BY	DATE

**ALL ANGLES ARE 90° UNLESS SPECIFIED**

DRAWN	salvopb	5/08
CHECKED		
ENG APPR.		



ITEM NO.	PART NUMBER	DESCRIPTION	QTY.
1	F60508A6	F W/650AS	1
2	F30041A3	AXLE-FRT/650A	1
3	F30173B1	AXLE-REAR/650A	1
4	F60004A5	WHL-10 D/M	2
5	F60065A1/R60065	SHOE WLDMT-RH A/600A -- CS, use R60065 for RPMTS	1
6	F60066A0/R60066	SHOE WLDMT-LH A/600A -- CS, use R60066 for RPMTS	1
7	Z30135A4	WHL-6 x 2 U/P 3/4	2
8	Z50085A2	GRIP-HDL 1-1/4" BLK	2
9	Z10223A9	RING-RTNG 1	2
10	Z10236A4	RING-RTNG 3/4 5304	2
11	F60063B1/R60063	C H ASSY-A/STD -- CS, use R60063 for RPMTS	1
11	F62771A2	CH ASSY-A/ CABLE	1
11	F60950A9	CH ASSY-A/ FIBER	1
11	F60947A5	CH ASSY-S/ LOCKING	1
11	F60945A7	CH ASSY-S/ PLASTIC	1
12	Z10184A6	S-RHM 5/16-18X1-3/4	2
13	Z10036A6	NUT-HEX KEPS 5/16-18	4
14	Z10122A1	S-HHC 5/16-18X3/4	2
15	Z10045A5	NUT-NYL NE 5/16-18	2
16	Z10008A0	BUSH-MACH 6H 3/4x18GAx1-1/4 OD	2
17	Z10010A6	BUSH-MACH 3/4x10GAx1-1/4 OD	2
18	Z10011A5	BUSH-MACH 1x18GAx1-1/2 OD	2
19	Z10012A4	BUSH-MACH 1x14GAx1-1/2 OD	2
20	Z10013A3	BUSH-MACH 1x10GAx1-1/2 OD	2
21	Z10200A6	WASHER-1/4 FLAT USS	2
22	F57260A9	BRG-STL FLG 1.01X1.05X.5	2
23	Z10491A6	BUSH-MACH 3/4x18GAx1-1/2 OD	4
26	F57261A8	BRG-STL FLG .760X.825X.5	2
31	Z10125A8	S-HHC 5/16-18X1-1/2	2

DETAIL A  
SCALE 1:8

**PROPRIETARY AND CONFIDENTIAL**

THE INFORMATION CONTAINED IN THIS DRAWING IS THE SOLE PROPERTY OF VALLEY CRAFT. ANY REPRODUCTION IN PART OR AS A WHOLE WITHOUT THE WRITTEN PERMISSION OF VALLEY CRAFT IS PROHIBITED.

**UNLESS OTHERWISE SPECIFIED:**

DECIMALS  
2 PLACES ±0.01  
3 PLACES ±0.005  
ANGLE ±1°

**GRIND/SAND SHARP EDGES .015 MAX DOES NOT APPLY TO DRILLED HOLE DIA.**



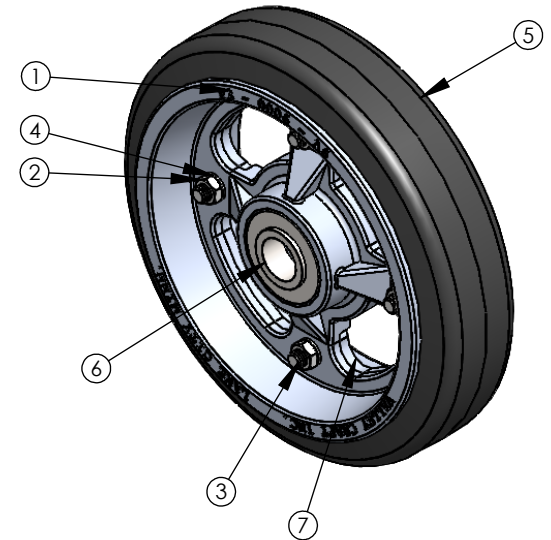
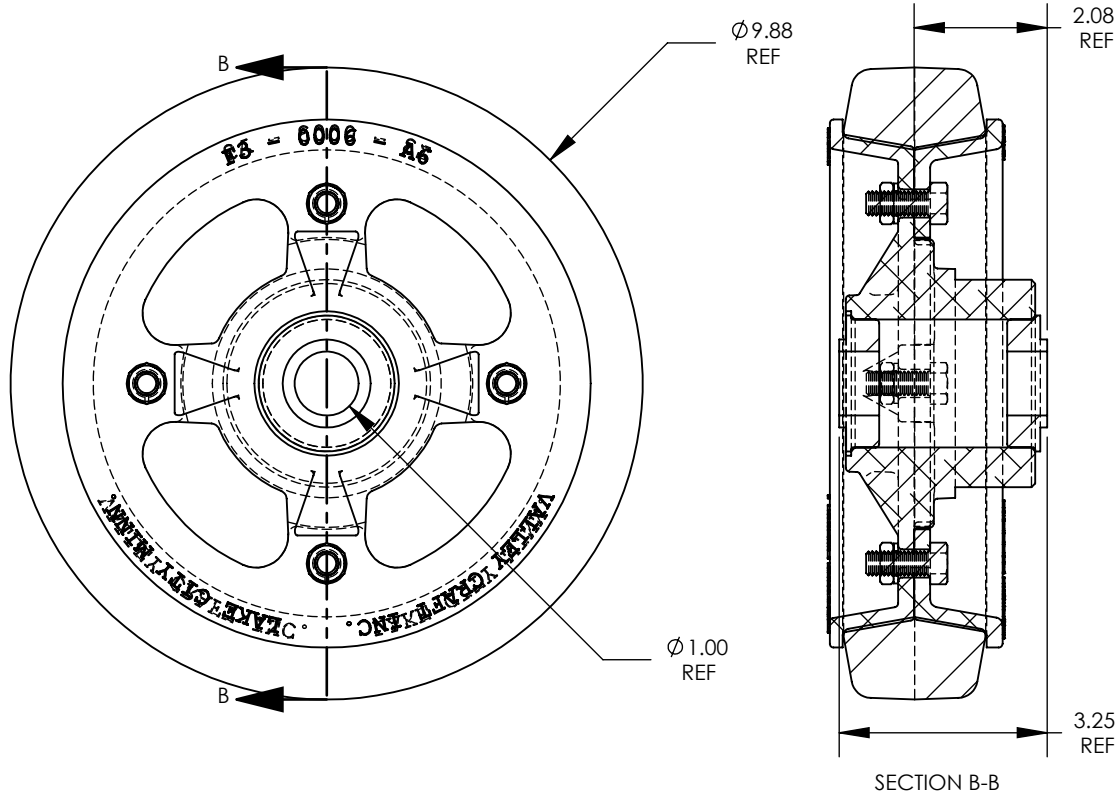
2001 South Hwy. 61, Lake City, MN 55041-9555, U.S.A.

**TITLE:** TRK-DRUM/650AS STD CH

C	E21-037	ADDED (2) F57261A8	DN	04/30/2021
CHG.	E.C.O.	DESCRIPTION / WAS	BY	DATE

**ALL ANGLES ARE 90° UNLESS SPECIFIED**

	NAME	DATE	SIZE	<b>PART NO.</b>
DRAWN	salvopb	5/08	A	F82425A0
CHECKED				<b>MATL:</b>
ENG APPR.			SCALE: 1:24	WEIGHT: 48.72 SHEET 2 OF 3



NOTES:

- $\triangle A$  : 10 X 2-1/2 TIRE SIZE
- $\triangle B$  : SMOOTH TREAD PATTERN
- $\triangle C$  : SOFT RUBBER WHEEL MATERIAL
- $\triangle D$  : 600# LOAD CAPACITY
- $\triangle E$  : 8.5# WEIGHT/WHEEL
- $\triangle F$  : ALUMINUM HUB MATERIAL
- $\triangle G$  : BALL BEARING TYPE
- $\triangle H$  : SILVER HUB COLOR

ITEM NO.	PART NUMBER	DESCRIPTION	QT. Y.
1	F30006A6	HUB-D/M 10X2.5	1
2	Z10026A8	NUT-HEX JAM 3/8-16ZP	4
3	Z10132A9	S-HHC 3/8-16X1	4
4	Z10214A0	WASHER-3/8 LOCK MD	4
5	Z30001A5	TIRE-HARD BASE D/M 10 X 2-1/2	1
6	Z30002A4	BRG-FLG 1/RPMT	2
7	Z30003A3	FLG-D/M 10X.5HD-10F	1

**PROPRIETARY AND CONFIDENTIAL**

THE INFORMATION CONTAINED IN THIS DRAWING IS THE SOLE PROPERTY OF VALLEY CRAFT. ANY REPRODUCTION IN PART OR AS A WHOLE WITHOUT THE WRITTEN PERMISSION OF VALLEY CRAFT IS PROHIBITED.

**UNLESS OTHERWISE SPECIFIED:**

DECIMALS  
2 PLACES  $\pm 0.01$   
3 PLACES  $\pm 0.005$   
ANGLE  $\pm 1^\circ$

**GRIND/SAND SHARP EDGES .015 MAX DOES NOT APPLY TO DRILLED HOLE DIA.**

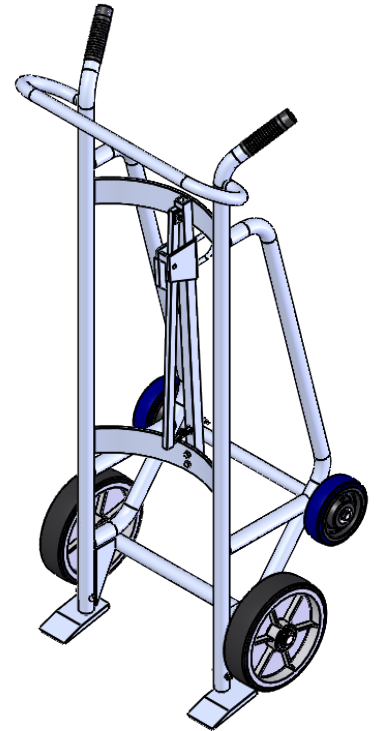
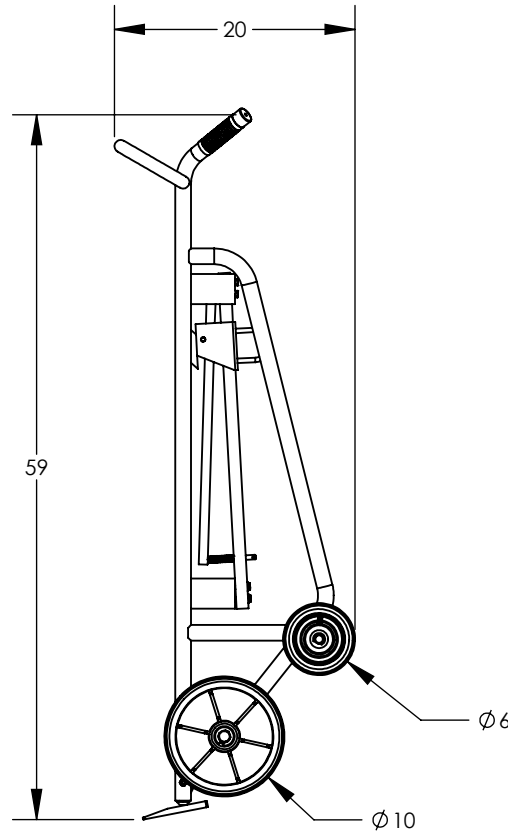
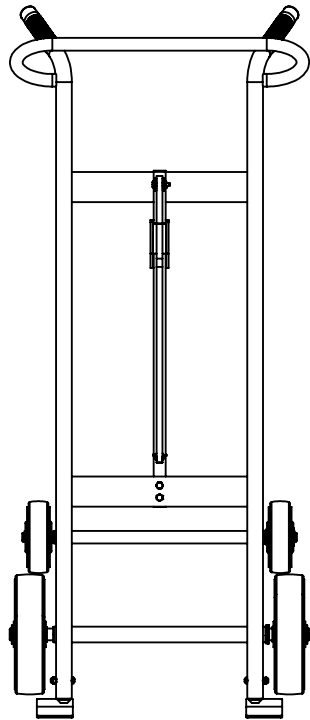
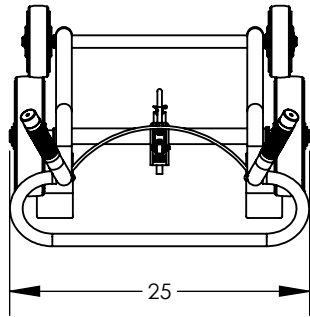


**TITLE:** WHL-10 D/M

DRAWN	JS	SIZE	PART NO. F60004A5
CHECKED		A	
ENG APPR.		MATERIAL:	
		SCALE: 1:3	WEIGHT:
		SHEET 3 OF 3	

A	-	DRAWN	JS	01/29/2009
CHG.	E.C.O.	DESCRIPTION / WAS	BY	DATE

**ALL ANGLES ARE 90° UNLESS SPECIFIED**



FRAME MATERIAL: ALUMINUM  
 WHEELS: MOLD-ON  
 BRAKE: NO  
 LOAD CAPACITY: 1,000 LBS.  
 WEIGHT: 45 LBS.  
 WIDTH: 25"  
 DEPTH: 20"  
 HEIGHT: 58.9"  
 LOCKING CHIME HOOK "L" AS SUFFIX  
 FIBER CHIME HOOK "F" AS SUFFIX  
 CABLE CHIME HOOK "C" AS SUFFIX  
 PLASTIC CHIME HOOK "P" AS SUFFIX

**PROPRIETARY AND CONFIDENTIAL**

THE INFORMATION CONTAINED IN THIS DRAWING IS THE SOLE PROPERTY OF VALLEY CRAFT. ANY REPRODUCTION IN PART OR AS A WHOLE WITHOUT THE WRITTEN PERMISSION OF VALLEY CRAFT IS PROHIBITED.

**UNLESS OTHERWISE SPECIFIED:**

DECIMALS  
 2 PLACES  $\pm 0.01$   
 3 PLACES  $\pm 0.005$   
 ANGLE  $\pm 1^\circ$

**GRIND/SAND SHARP EDGES .015 MAX DOES NOT APPLY TO DRILLED HOLE DIA.**



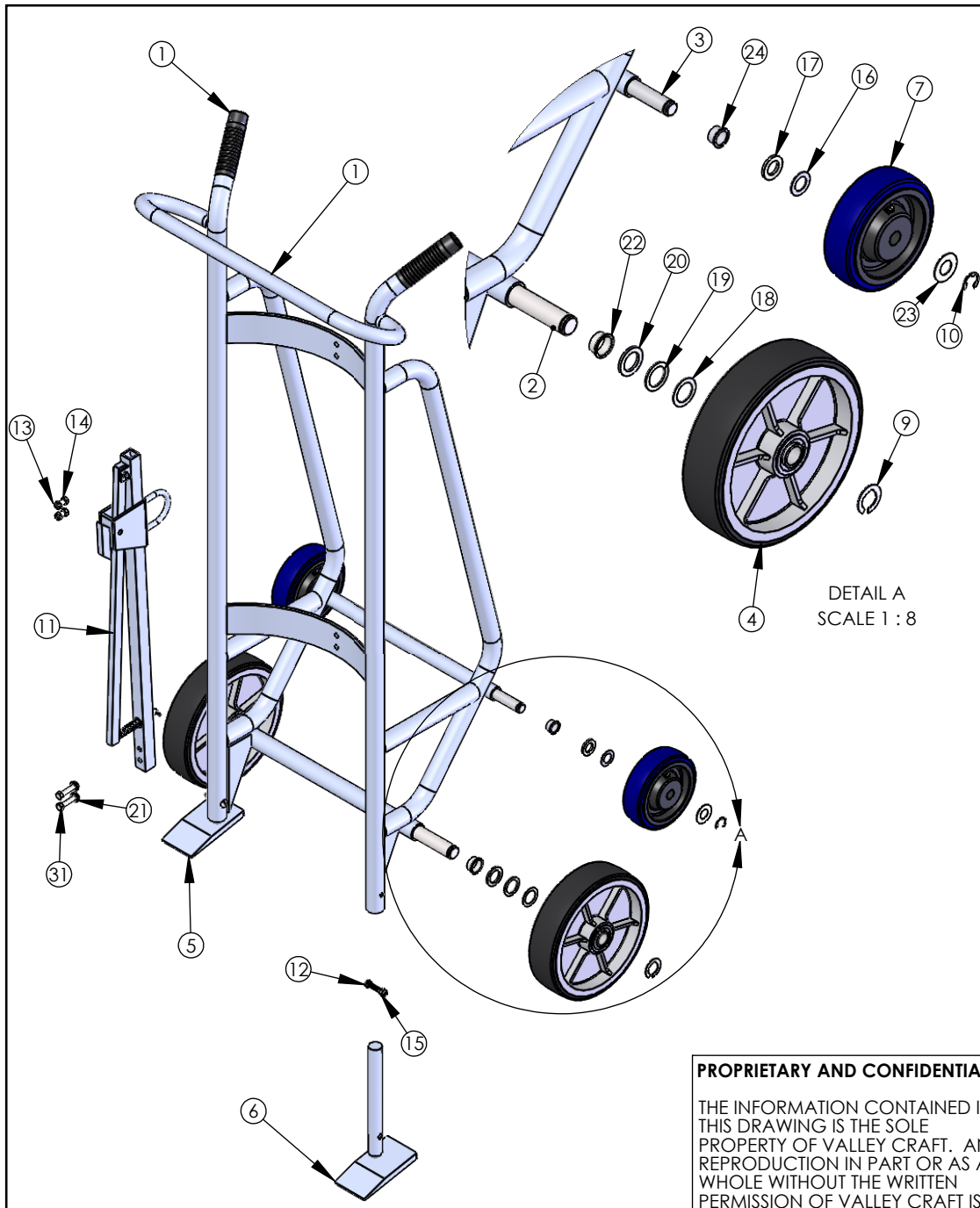
**TITLE:** TRK-DRUM/650ASM STD CH

	NAME	DATE
DRAWN	DN	04/12/2019
CHECKED		
ENG APPR.		

SIZE	PART NO.
A	F82645A4
<b>MATL:</b>	
SCALE: 1:16	WEIGHT: 54.54 SHEET 1 OF 2

CHG.	E.C.O.	DESCRIPTION / WAS	BY	DATE
C	E21-037	ADDED (2) F57261A8	DN	04/30/2021

**ALL ANGLES ARE 90° UNLESS SPECIFIED**



ITEM NO.	PART NUMBER	DESCRIPTION	QTY.
1	F60508A6	F W/650AS	1
2	F30041A3	AXLE-FRT/650A	1
3	F30173B1	AXLE-REAR/650A	1
4	F60011A6	WHL-10 M/O	2
5	F60065A1/R60065	SHOE WLDMT-RH A/600A -- CS, use R60065 for RPMTS	1
6	F60066A0/R60066	SHOE WLDMT-LH A/600A -- CS, use R60066 for RPMTS	1
7	Z30135A4	WHL-6 x 2 U/P 3/4	2
8	Z50085A2	GRIP-HDL 1-1/4" BLK	2
9	Z10223A9	RING-RTNG 1	2
10	Z10236A4	RING-RTNG 3/4 5304	2
11	F60063B1/R60063	C H ASSY-A/STD -- CS, use R60063 for RPMTS	1
11	F62771A2	CH ASSY-A/ CABLE	1
11	F60950A9	CH ASSY-A/ FIBER	1
11	F60947A5	CH ASSY-S/ LOCKING	1
11	F60945A7	CH ASSY-S/ PLASTIC	1
12	Z10184A6	S-RHM 5/16-18X1-3/4	2
13	Z10036A6	NUT-HEX KEPS 5/16-18	4
14	Z10122A1	S-HHC 5/16-18X3/4	2
15	Z10045A5	NUT-NYL NE 5/16-18	2
16	Z10008A0	BUSH-MACH 6H 3/4x18GAx1-1/4 OD	2
17	Z10010A6	BUSH-MACH 3/4x10GAx1-1/4 OD	2
18	Z10011A5	BUSH-MACH 1x18GAx1-1/2 OD	2
19	Z10012A4	BUSH-MACH 1x14GAx1-1/2 OD	2
20	Z10013A3	BUSH-MACH 1x10GAx1-1/2 OD	8
21	Z10200A6	WASHER-1/4 FLAT USS	2
22	F57260A9	BRG-STL FLG 1.01X1.05X.5	2
23	Z10491A6	BUSH-MACH 3/4x18GAx1-1/2 OD	4
24	F57261A8	BRG-STL FLG .760X.825X.5	2
31	Z10125A8	S-HHC 5/16-18X1-1/2	2

DETAIL A  
SCALE 1 : 8

**PROPRIETARY AND CONFIDENTIAL**  
THE INFORMATION CONTAINED IN THIS DRAWING IS THE SOLE PROPERTY OF VALLEY CRAFT. ANY REPRODUCTION IN PART OR AS A WHOLE WITHOUT THE WRITTEN PERMISSION OF VALLEY CRAFT IS PROHIBITED.

**UNLESS OTHERWISE SPECIFIED:**  
DECIMALS  
2 PLACES ±0.01  
3 PLACES ±0.005  
ANGLE ±1°  
**GRIND/SAND SHARP EDGES .015 MAX DOES NOT APPLY TO DRILLED HOLE DIA.**



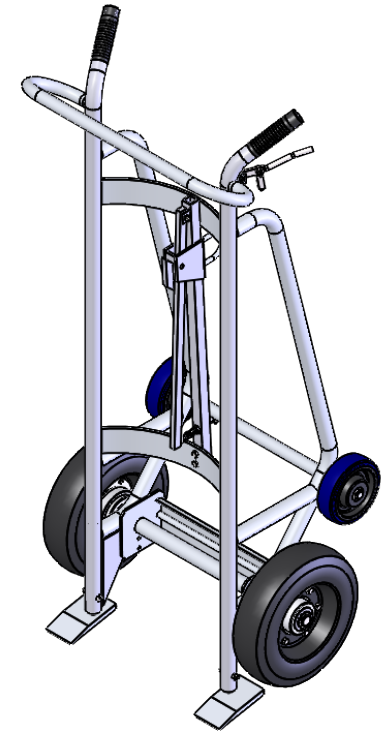
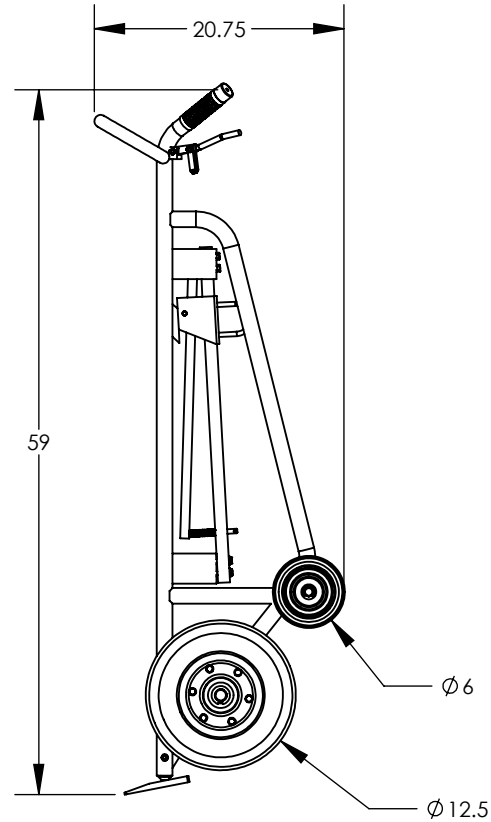
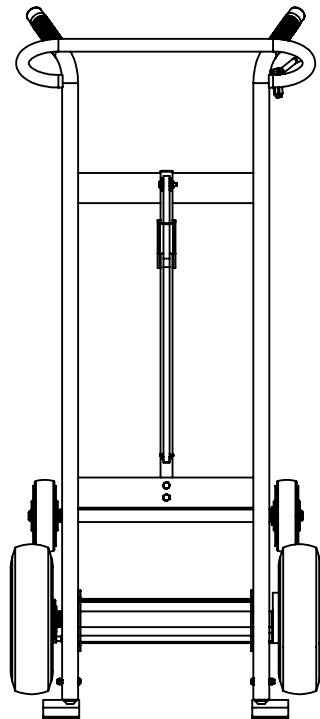
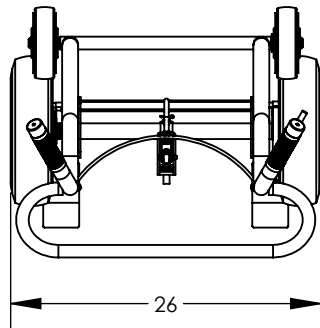
**TITLE:** TRK-DRUM/650ASM STD CH

C	E21-037	ADDED (2) F57261A8	DN	04/30/2021
CHG.	E.C.O.	DESCRIPTION / WAS	BY	DATE

**ALL ANGLES ARE 90° UNLESS SPECIFIED**

DRAWN	DN	04/12/2019	SIZE	A	PART NO.	F82645A4
CHECKED					MATL:	
ENG APPR.			SCALE:	1:24	WEIGHT:	54.54
						SHEET 2 OF 2





FRAME MATERIAL: ALUMINUM  
 WHEELS: PNEUMATIC  
 BRAKE: YES  
 LOAD CAPACITY: 1,000 LBS.  
 WEIGHT: 52 LBS.  
 WIDTH: 26"  
 DEPTH: 20-3/4"  
 HEIGHT: 58.9"  
 LOCKING CHIME HOOK "L" AS SUFFIX  
 FIBER CHIME HOOK "F" AS SUFFIX  
 CABLE CHIME HOOK "C" AS SUFFIX  
 PLASTIC CHIME HOOK "P" AS SUFFIX

**PROPRIETARY AND CONFIDENTIAL**

THE INFORMATION CONTAINED IN THIS DRAWING IS THE SOLE PROPERTY OF VALLEY CRAFT. ANY REPRODUCTION IN PART OR AS A WHOLE WITHOUT THE WRITTEN PERMISSION OF VALLEY CRAFT IS PROHIBITED.

**UNLESS OTHERWISE SPECIFIED:**

DECIMALS  
 2 PLACES  $\pm 0.01$   
 3 PLACES  $\pm 0.005$   
 ANGLE  $\pm 1^\circ$

**GRIND/SAND SHARP EDGES .015 MAX DOES NOT APPLY TO DRILLED HOLE DIA.**



**TITLE:** TRK-DRUM/675AA STD CH

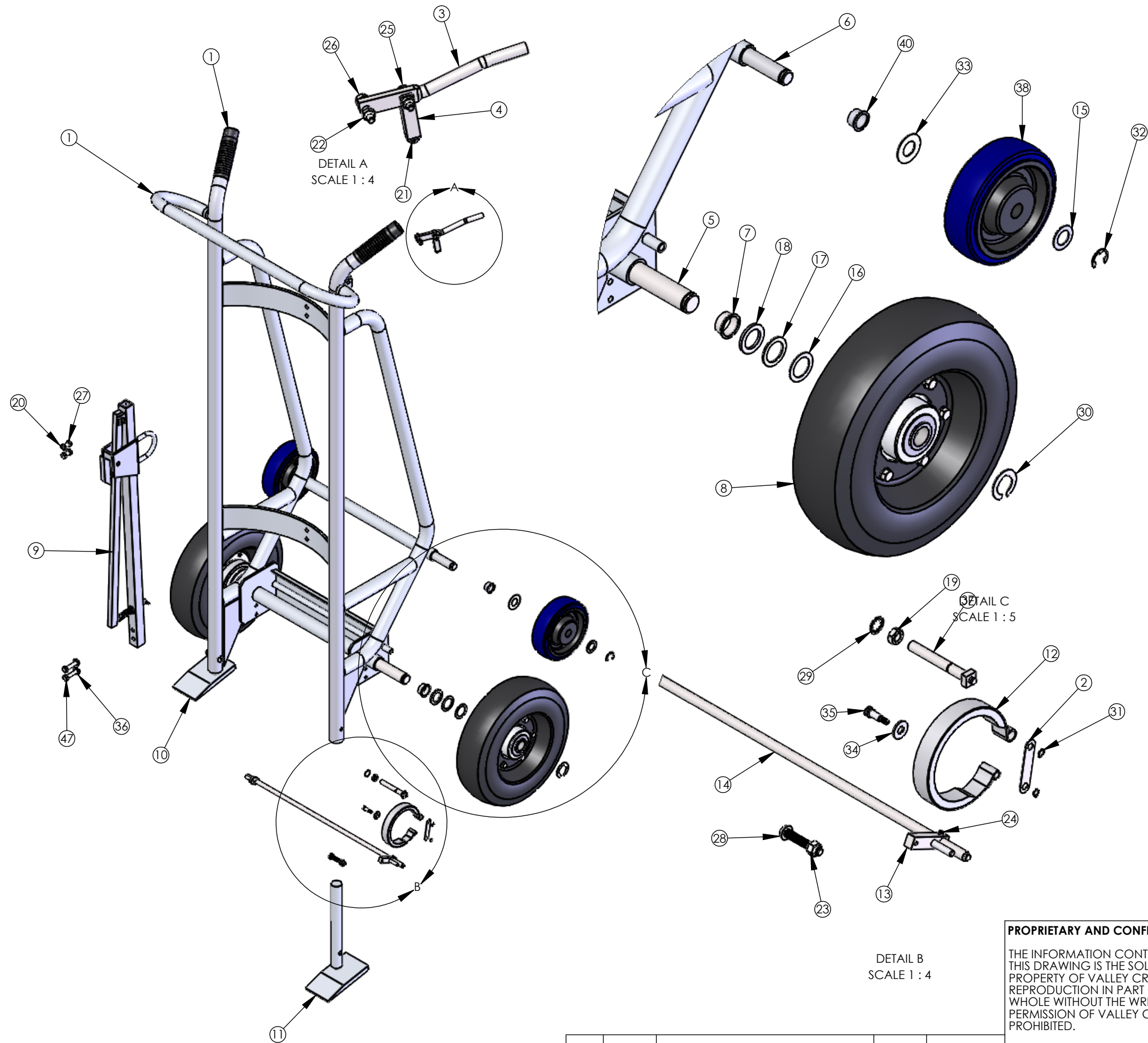
B	E21-037	ADDED (2) F57261A8	DN	04/30/2021
CHG.	E.C.O.	DESCRIPTION / WAS	BY	DATE

**ALL ANGLES ARE 90° UNLESS SPECIFIED**

	NAME	DATE
DRAWN	DN	04/10/2019
CHECKED		
ENG APPR.		

SIZE	<b>PART NO.</b>	F82960A1
<b>A</b>	<b>MATL:</b>	Material <not specified>
SCALE: 1:24	WEIGHT: 64.79	SHEET 1 OF 3

Not Modeled: F68682A8: BRAKE CABLE ASSEMBLY 46.50" Qty. 1



ITEM NO.	PART NUMBER	DESCRIPTION	QTY.
1	F60509A5	F W/675AA	1
2	F30012A8	LINK-CONN/825 (STK)	2
3	F30013A7	HDL-BRK/825	1
4	F30014A6	CLEVIS-BRK CABLE	1
5	F30041A3	AXLE-FRT/650A	1
6	F30173B1	AXLE-REAR/650A	1
7	F57260A9	BRG-STL FLG 1.01X1.05X.5	2
8	F60032A1	WHL-12 AIR BRK	2
9	F60063B1/R60063	C H ASSY-A/STD -- CS, use R60063 for RPMTS	1
9	F62771A2	CH ASSY-A/ CABLE	1
9	F60950A9	CH ASSY--A/ FIBER	1
9	F60947A5	CH ASSY-S/ LOCKING	1
9	F60945A7	CH ASSY-S/ PLASTIC	1
10	F60065A1/R60065	SHOE WLDMT-RH A/600A -- CS, use R60065 for RPMTS	1
11	F60066A0/R60066	SHOE WLDMT-LH A/600A -- CS, use R60066 for RPMTS	1
12	F62177A2	BRK BAND ASSY	2
13	F68656A4	BRK ROD PIN WLDMT	1
14	F68891A9	BRK ROD WLDMT-20.63	1
15	Z10008A0	BUSH-MACH 6H 3/4x18Gax1-1/4 OD	2
16	Z10011A5	BUSH-MACH 1x18Gax1-1/2 OD	2
17	Z10012A4	BUSH-MACH 1x14Gax1-1/2 OD	2
18	Z10013A3	BUSH-MACH 1x10Gax1-1/2 OD	2
19	Z10030A2	NUT-HEX JAM 3/8-24	2
20	Z10036A6	NUT-HEX KEPS 5/16-18	4
21	Z10041A9	NUT-HEX MACH #10-32	1
22	Z10043A7	NUT-NYL NE 1/4-20	2
23	Z10045A5	NUT-NYL NE 5/16-18	2
24	Z10069A6	PIN-SPG 3/16X5/8	1
25	Z10112A3	S-HHC 1/4-20X1	1
26	Z10113A2	S-HHC 1/4-20X1-1/4	1
27	Z10122A1	S-HHC 5/16-18X3/4	2
28	Z10184A6	S-RHM 5/16-18X1-3/4	2
29	Z10209A7	WASHER-3/8 LOCK INT TOOTH	2
30	Z10223A9	RING-RTNG 1	2
31	Z10231A9	RING-RTNG 1/4	4
32	Z10236A4	RING-RTNG 3/4 5304	2
33	Z10491A6	BUSH-MACH 3/4x18Gax1-1/2 OD	4
34	Z10602A2	WASHER-1/4 FLAT SAE	1
35	Z10805A2	BOLT-STRIPPER 1/4X1/2	1
36	Z10200A6	WASHER-1/4 FLAT USS	2
37	Z30012A2	ECC-BRK SHORT	2
38	Z30135A4	WHL-6 x 2 U/P 3/4	2
39	Z50085A2	GRIP-HDL 1-1/4" BLK	2
40	F57261A8	BRG-STL FLG .760X.825X.5	2
47	Z10125A8	S-HHC 5/16-18X1-1/2	2

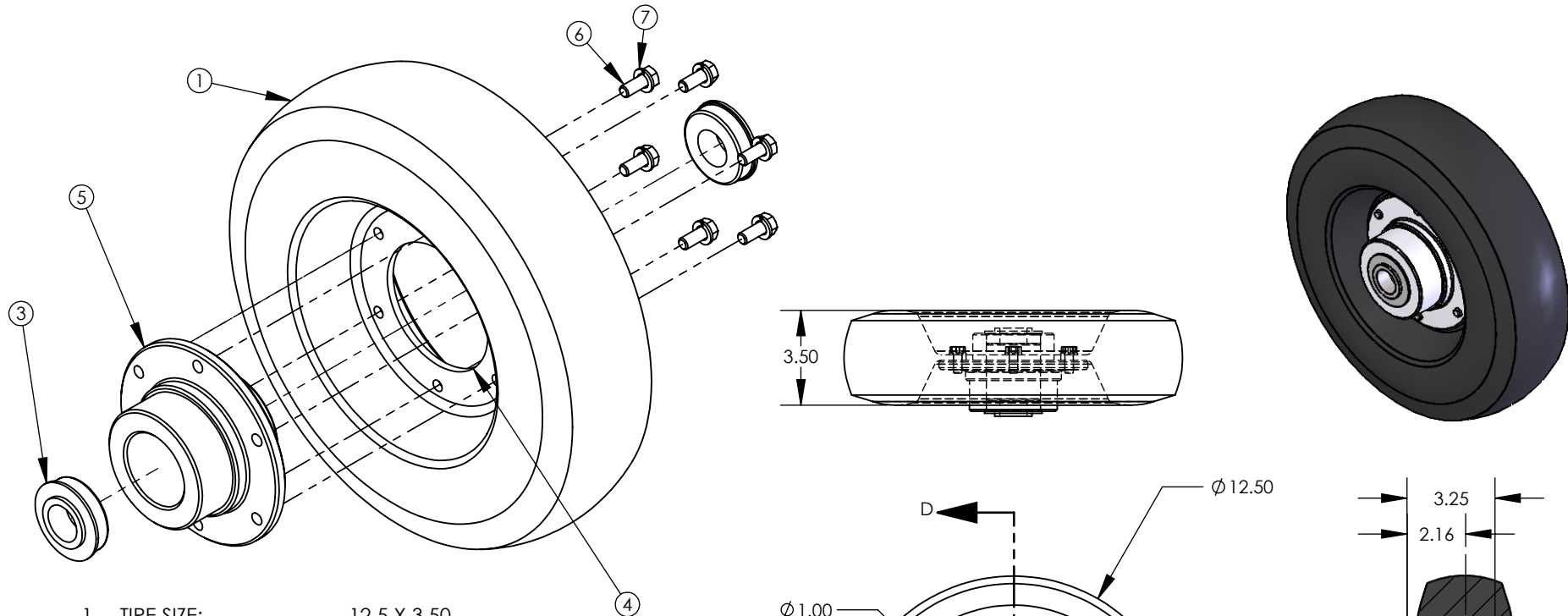
**PROPRIETARY AND CONFIDENTIAL**  
 THE INFORMATION CONTAINED IN THIS DRAWING IS THE SOLE PROPERTY OF VALLEY CRAFT. ANY REPRODUCTION IN PART OR AS A WHOLE WITHOUT THE WRITTEN PERMISSION OF VALLEY CRAFT IS PROHIBITED.

**UNLESS OTHERWISE SPECIFIED:**  
 DECIMALS  
 2 PLACES ±0.01  
 3 PLACES ±0.005  
 ANGLE ±1°  
 GRIND/SAND SHARP EDGES .015 MAX  
 DOES NOT APPLY TO DRILLED HOLE DIA.

**VALLEYCRAFT**  
 2001 South Hwy. 61, Lake City, MN 55041-9555, U.S.A.  
 TITLE: TRK-DRUM/675AA STD CH  
 SIZE: **PART NO.** F82960A1  
**MATL:** Material <not specified>  
 SCALE: 1:16 WEIGHT: 64.79 SHEET 2 OF 3

B	E21-037	ADDED (2) F57261A8	DN	04/30/2021
CHG	E.C.O.	DESCRIPTION / WAS	BY	DATE

**ALL ANGLE ARE 90° UNLESS SPECIFIED**



- 1. TIRE SIZE: 12.5 X 3.50
- 2. TREAD PATTERN: SAWTOOTH
- 3. WHEEL MATERIAL: RUBBER
- 4. LOAD CAP./WHEEL: 1535#
- 5. WEIGHT/WHEEL: 8#
- 6. OVERALL HUB WIDTH: 3.25
- 7. OFFSET CENTER OF
- 8. WHEEL TO END OF HUB: 2.16
- 9. HUB MATERIAL: ALUMINUM
- 10. BEARING TYPE: BALL
- 11. BORE OR AXLE SIZE: 1.00
- 12. HUB COLOR: SILVER
- 13. GREASE ZERK: NO
- 14. VENDOR: FASTENAL COMPANY

Item Number	Part Number	Description	Qty.
1	Z30007A9	TIRE-AIR 12	1
2	Z30008A8	TUBE-AIR 12	1
3	Z30002A4	BEARING-FLG 1/RPMT	2
4	Z30054A1/R70054	RIM-FEMALE AIR 12B -- CS use R70054 as RPMTS	1
5	Z30055A0/R70055	RIM-MALE AIR 12B -- CS use R70055 as RPMTS	1
6	Z10139A2	S-HHC 3/8-24X5/8	6
7	Z10214A0	WASHER-3/8 LOCK MD	6

**PROPRIETARY AND CONFIDENTIAL**  
 THE INFORMATION CONTAINED IN THIS DRAWING IS THE SOLE PROPERTY OF VALLEY CRAFT. ANY REPRODUCTION IN PART OR AS A WHOLE WITHOUT THE WRITTEN PERMISSION OF VALLEY CRAFT IS PROHIBITED.

**UNLESS OTHERWISE SPECIFIED:**  
 DECIMALS  
 2 PLACES ±0.01  
 3 PLACES ±0.005  
 ANGLE ±1°  
 GRIND/SAND SHARP EDGES .015 MAX  
 DOES NOT APPLY TO DRILLED HOLE DIA.



2001 South Hwy. 61, Lake City, MN 55041-9555, U.S.A.

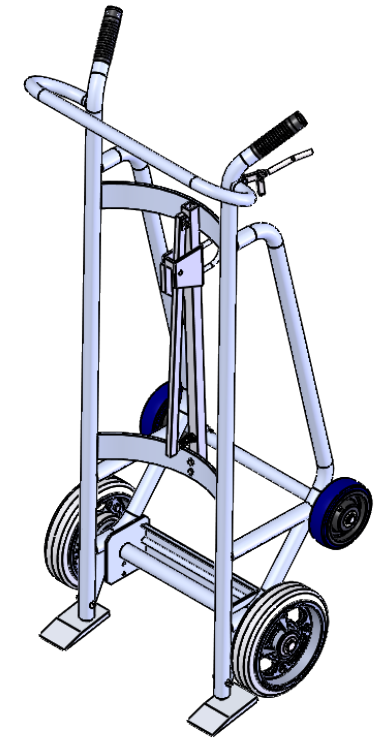
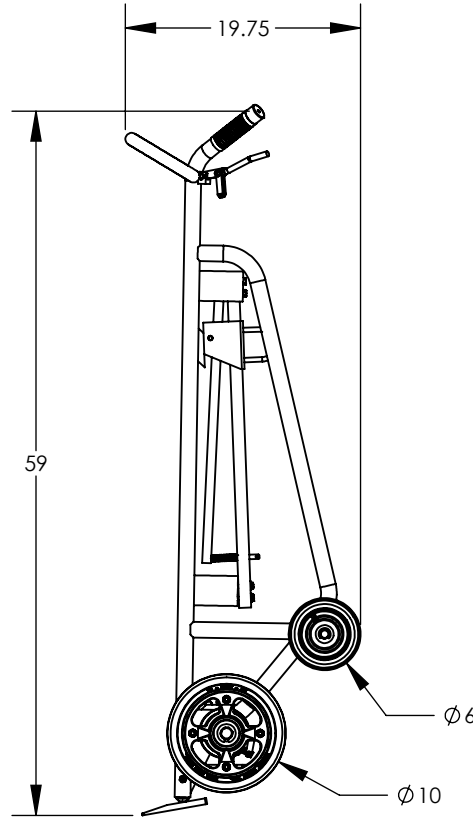
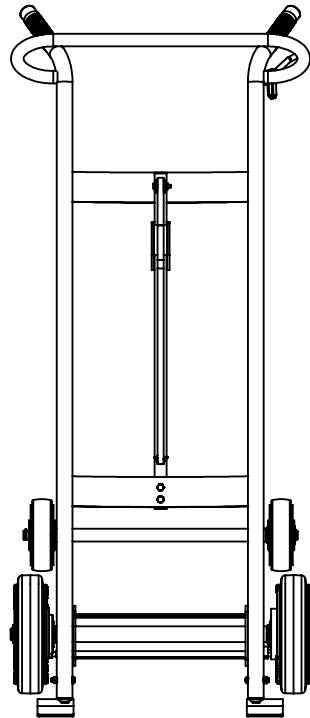
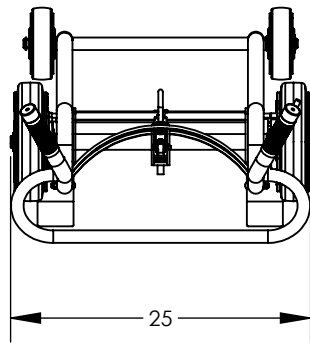
**TITLE:** WHL-12 AIR BRK

	NAME	DATE
DRAWN		
CHECKED		
ENG APPR.		

SIZE	PART NO.
A	F60032A1
<b>MATL:</b>	
SCALE: 1:6	WEIGHT:
SHEET 3 OF 3	

CHG.	E.C.O.	DESCRIPTION / WAS	BY	DATE
A				10/31/2009

**ALL ANGLES ARE 90° UNLESS SPECIFIED**



FRAME MATERIAL: ALUMINUM  
 WHEELS: SOLID RUBBER  
 BRAKE: YES  
 LOAD CAPACITY: 1,000 LBS.  
 WEIGHT: 51 LBS.  
 WIDTH: 25"  
 DEPTH: 19-3/4"  
 HEIGHT: 58.9"  
 LOCKING CHIME HOOK "L" AS SUFFIX  
 FIBER CHIME HOOK "F" AS SUFFIX  
 CABLE CHIME HOOK "C" AS SUFFIX  
 PLASTIC CHIME HOOK "P" AS SUFFIX

**PROPRIETARY AND CONFIDENTIAL**

THE INFORMATION CONTAINED IN THIS DRAWING IS THE SOLE PROPERTY OF VALLEY CRAFT. ANY REPRODUCTION IN PART OR AS A WHOLE WITHOUT THE WRITTEN PERMISSION OF VALLEY CRAFT IS PROHIBITED.

**UNLESS OTHERWISE SPECIFIED:**

DECIMALS  
 2 PLACES ±0.01  
 3 PLACES ±0.005  
 ANGLE ±1°

**GRIND/SAND SHARP EDGES .015 MAX DOES NOT APPLY TO DRILLED HOLE DIA.**



**TITLE:** TRK-DRUM/675AS STD CH

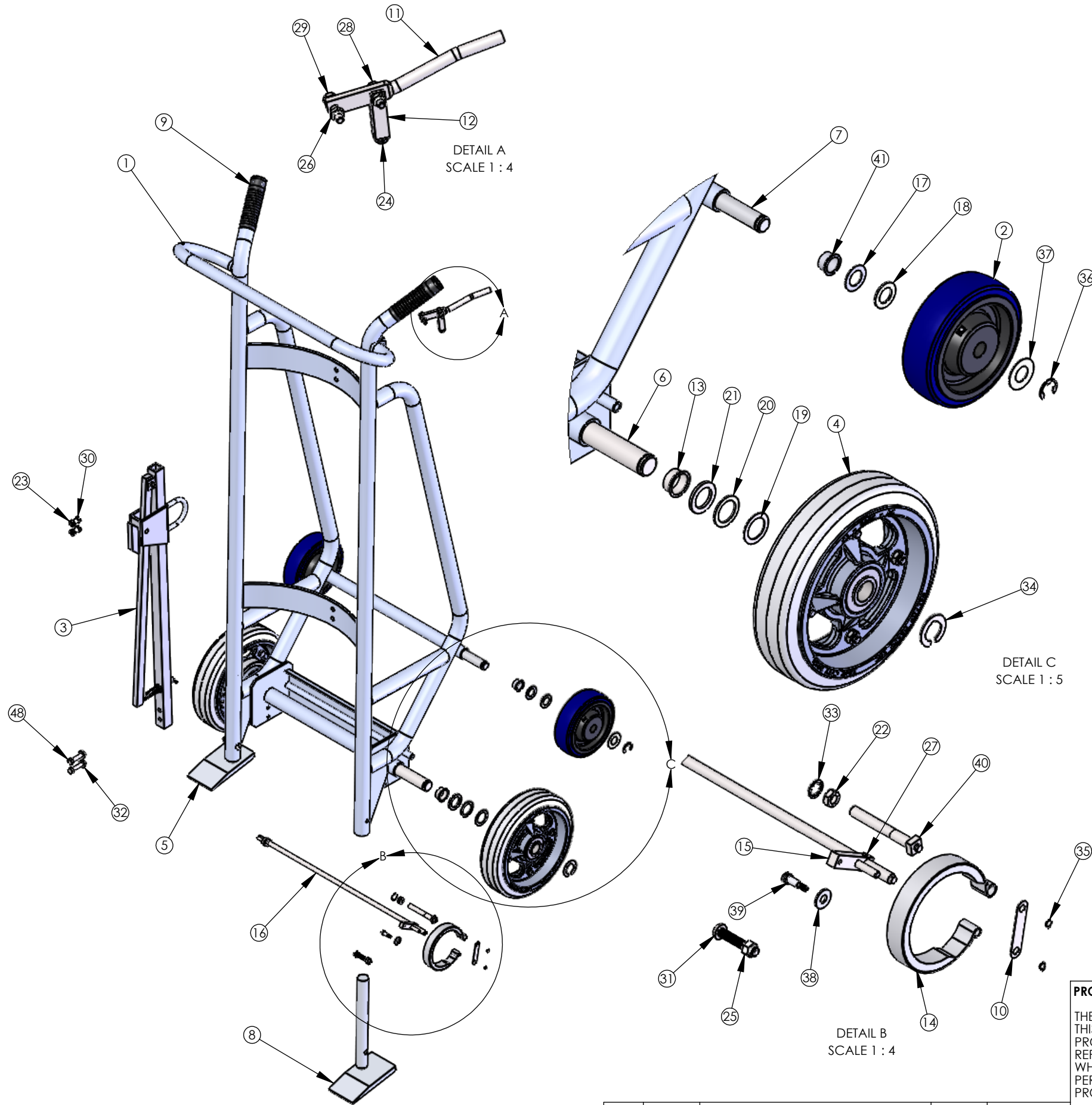
B	E21-037	ADDED (2) F57261A8	DN	4/30/2021
CHG.	E.C.O.	DESCRIPTION / WAS	BY	DATE

**ALL ANGLES ARE 90° UNLESS SPECIFIED**

	NAME	DATE
DRAWN	salvopb	5/08
CHECKED		
ENG APPR.		

SIZE	<b>PART NO.</b>	F83210A7	
<b>A</b>	<b>MATL:</b>		
SCALE: 1:16	WEIGHT: 52.36	SHEET 1 OF 3	

Not Modeled: F68681A9: BRAKE CABLE ASSEMBLY - 48.25" Qty. 1



ITEM NO.	PART NUMBER	DESCRIPTION	QTY.
1	F60058A0	F W/675AS	1
2	Z30135A4	WHL-6 x 2 U/P 3/4	2
3	F60063B1/R60063	C H ASSY-A/STD -- CS, use R60063 for RPMTS	1
3	F62771A2	CH SAAAY-A/ CABLE	1
3	F60950A9	CH ASSY-A/ FIBER	1
3	F60947A5	CH ASSY-S/ LOCKING	1
3	F60945A7	CH ASSY-S/ PLASTIC	1
4	F60004A5	WHL-10 D/M	2
5	F60065A1/R60065	SHOE WLDMT-RH A/600A -- CS, use R60065 for RPMTS	1
6	F30041A3	AXLE-FRT/650A	1
7	F30173B1	AXLE-REAR/650A	1
8	F60066A0/R60066	SHOE WLDMT-LH A/600A -- CS, use R60066 for RPMTS	1
9	Z50085A2	GRIP-HDL 1-1/4" BLK	2
10	F30012A8	LINK-CONN/825 (STK)	2
11	F30013A7	HDL-BRK/825	1
12	F30014A6	CLEVIS-BRK CABLE	1
13	F57260A9	BRG-STL FLG 1.01X1.05X.5	2
14	F62177A2	BRK BAND ASSY	2
15	F68656A4	BRK ROD PIN WLDMT	1
16	F68891A9	BRK ROD WLDMT-20.63	1
17	Z10008A0	BUSH-MACH 6H 3/4x18GAx1-1/4 OD	2
18	Z10009A9	BUSH-MACH 3/4x14GAx1-1/4 OD	2
19	Z10011A5	BUSH-MACH 1x18GAx1-1/2 OD	2
20	Z10012A4	BUSH-MACH 1x14GAx1-1/2 OD	2
21	Z10013A3	BUSH-MACH 1x10GAx1-1/2 OD	2
22	Z10030A2	NUT-HEX JAM 3/8-24	2
23	Z10036A6	NUT-HEX KEPS 5/16-18	4
24	Z10041A9	NUT-HEX MACH #10-32	1
25	Z10045A5	NUT-NYL NE 5/16-18	2
26	Z10043A7	NUT-NYL NE 1/4-20	2
27	Z10069A6	PIN-SPG 3/16X5/8	1
28	Z10112A3	S-HHC 1/4-20X1	1
29	Z10113A2	S-HHC 1/4-20X1-1/4	1
30	Z10122A1	S-HHC 5/16-18X3/4	2
31	Z10184A6	S-RHM 5/16-18X1-3/4	2
32	Z10200A6	WASHER-1/4 FLAT USS	2
33	Z10209A7	WASHER-3/8 LOCK INT TOOTH	2
34	Z10223A9	RING-RTNG 1	2
35	Z10231A9	RING-RTNG 1/4	4
36	Z10236A4	RING-RTNG 3/4 5304	2
37	Z10491A6	BUSH-MACH 3/4x18GAx1-1/2 OD	4
38	Z10602A2	WASHER-1/4 FLAT SAE	1
39	Z10805A2	BOLT-STRIPPER 1/4X1/2	1
40	Z30012A2	ECC-BRK SHORT	2
41	F57261A8	BRG-STL FLG .760X.825X.5	2
48	Z10125A8	S-HHC 5/16-18X1-1/2	2

**PROPRIETARY AND CONFIDENTIAL**  
 THE INFORMATION CONTAINED IN THIS DRAWING IS THE SOLE PROPERTY OF VALLEY CRAFT. ANY REPRODUCTION IN PART OR AS A WHOLE WITHOUT THE WRITTEN PERMISSION OF VALLEY CRAFT IS PROHIBITED.

**UNLESS OTHERWISE SPECIFIED:**  
 DECIMALS  
 2 PLACES ±0.01  
 3 PLACES ±0.005  
 ANGLE ±1°  
 GRIND/SAND SHARP EDGES .015 MAX  
 DOES NOT APPLY TO DRILLED HOLE DIA.

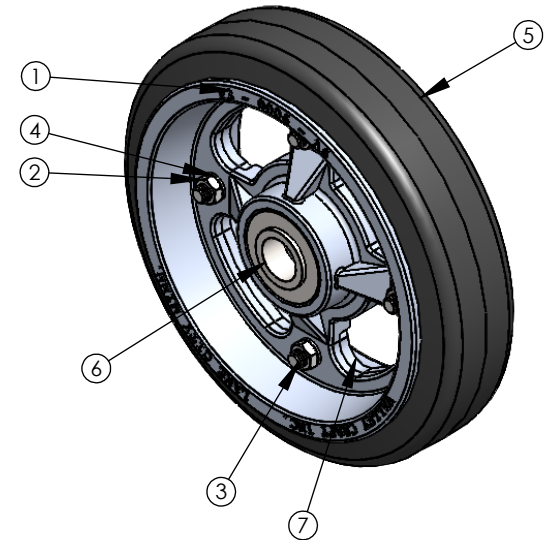
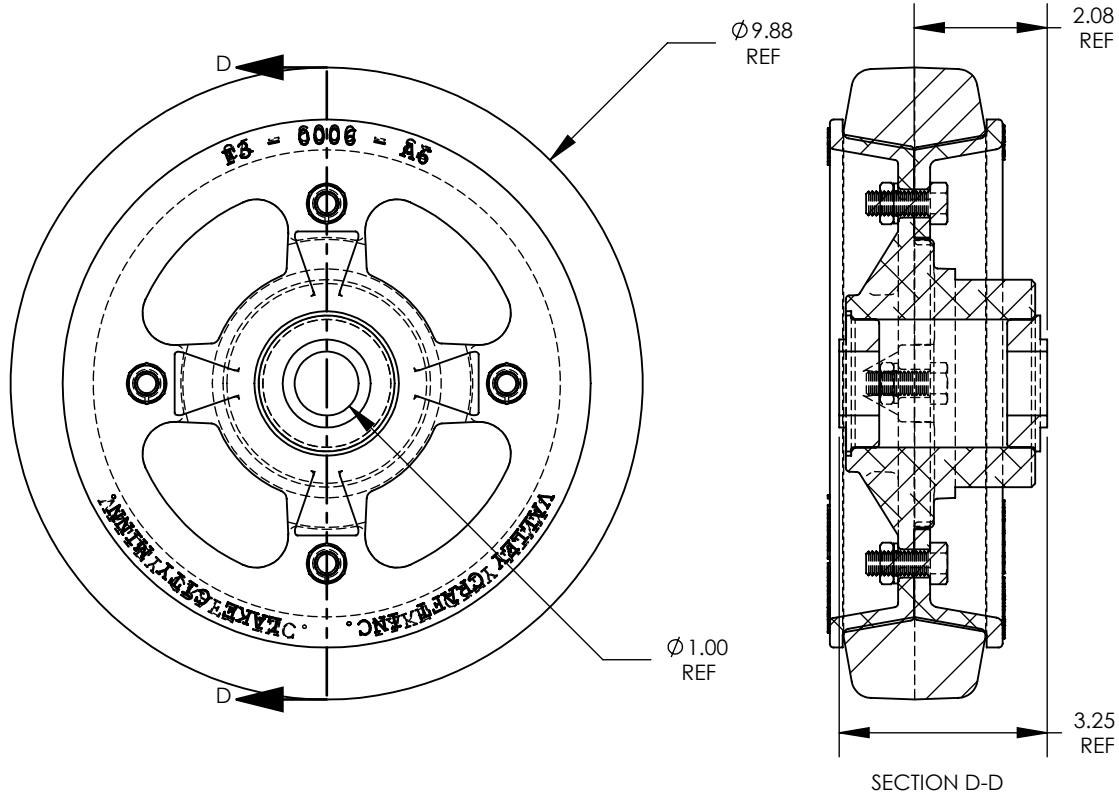
**VALLEYCRAFT**  
 2001 South Hwy. 61, Lake City, MN 55041-9555, U.S.A.  
 TITLE: TRK-DRUM/675AS STD CH

B	E21-037	ADDED (2) F57261A8	DN	4/30/2021
CHG	E.C.O.	DESCRIPTION / WAS	BY	DATE

**ALL ANGLE ARE 90° UNLESS SPECIFIED**

	NAME	DATE
DRAWN	salvopb	5/08
CHECKED		
ENG APPR.		

SIZE	<b>PART NO.</b> F83210A7
B	<b>MATL:</b>
SCALE:	1:16
WEIGHT:	52.36
SHEET 2 OF 3	



NOTES:

- △ A : 10 X 2-1/2 TIRE SIZE
- △ B : SMOOTH TREAD PATTERN
- △ C : SOFT RUBBER WHEEL MATERIAL
- △ D : 600# LOAD CAPACITY
- △ E : 8.5# WEIGHT/WHEEL
- △ F : ALUMINUM HUB MATERIAL
- △ G : BALL BEARING TYPE
- △ H : SILVER HUB COLOR

ITEM NO.	PART NUMBER	DESCRIPTION	QT. Y.
1	F30006A6	HUB-D/M 10X2.5	1
2	Z10026A8	NUT-HEX JAM 3/8-16ZP	4
3	Z10132A9	S-HHC 3/8-16X1	4
4	Z10214A0	WASHER-3/8 LOCK MD	4
5	Z30001A5	TIRE-HARD BASE D/M 10 X 2-1/2	1
6	Z30002A4	BRG-FLG 1/RPMT	2
7	Z30003A3	FLG-D/M 10X.5HD-10F	1

**PROPRIETARY AND CONFIDENTIAL**

THE INFORMATION CONTAINED IN THIS DRAWING IS THE SOLE PROPERTY OF VALLEY CRAFT. ANY REPRODUCTION IN PART OR AS A WHOLE WITHOUT THE WRITTEN PERMISSION OF VALLEY CRAFT IS PROHIBITED.

**UNLESS OTHERWISE SPECIFIED:**

DECIMALS  
2 PLACES ±0.01  
3 PLACES ±0.005  
ANGLE ±1°

**GRIND/SAND SHARP EDGES .015 MAX DOES NOT APPLY TO DRILLED HOLE DIA.**



**TITLE:** WHL-10 D/M

NAME	DATE	SIZE	PART NO.
DRAWN JS		A	F60004A5
CHECKED			<b>MATL:</b>
ENG APPR.		SCALE: 1:3	WEIGHT: SHEET 3 OF 3

A	-	DRAWN	JS	01/29/2009
CHG.	E.C.O.	DESCRIPTION / WAS	BY	DATE

**ALL ANGLES ARE 90° UNLESS SPECIFIED**